

NC STATE

HELENE RESPONSE RESOURCES FOR FARMERS AND FARM WORKERS WEBINAR

October 24, 2024

<https://forestrywebinars.net/webinars/helene-response-resources-for-farmers-and-farm-workers>

NC State Extension



1

NC STATE UNIVERSITY						October 24, 2024 Helene Response Resources webinar for Farmers and Farm Workers
Position in webinar	First name	Last name	Email Address	Position	Organization	
1	Jamie	Bookwalter	jbookwa@ncsu.edu	Mountain Conifer IPM Specialist for NC	NC State Extension	
2	Jerry	Moody	jerry_moody@ncsu.edu	County Extension Director and Extension Agent, Agriculture – Horticulture	NC State Extension	
3	Brad	Edwards	brad_edwards@ncsu.edu	IPM Program Assistant Ashe/Allegheny/Watauga	NC State Extension	
4	Sam	Marshall	wsmarsh2@ncsu.edu	Area Specialized Agent, Ornamental Nursery & Greenhouse, Western Region	NC State Extension	
5	Miguel	Perez	Perez.Miguel@dol.gov	Community Outreach and Resource Planning Specialist for the US Department of Labor - Wage and Hour Division for NC	Department of Labor	
6	Drew	Long	Drew.long@commerce.nc.gov	Agriculture and Foreign Labor Program Director with NC Department of Commerce, Workforce Solutions	NC Department of Commerce	
7	Beth	Rodman	beth.rodman@labor.nc.gov	Bureau Chief with the NC Agriculture Safety & Health Bureau	NC Department of Labor	
8	Dulce	Arroyo	dulce.arroyo@dhhs.nc.gov	Agricultural Partner Engagement Coordinator	NC Farmworker Health Program, Office of Rural Health	
9	Alyssa	Spence	SPENCEA20@ecu.edu	Interim Director, NC Agromedicine Institute	NC Agromedicine Institute	
10	Bob	Etheridge	bob.etheridge@usda.gov	State Executive Director of the USDA Farm Service Agency (FSA)	USDA FSA	
11	James	Davis	jamesa.davis@usda.gov	Price Support and Operations Chief	USDA FSA	
12	Melissa	Smith	melissa.b.smith@usda.gov	Farm Programs Chief	USDA FSA	
13	Evalena	Best	evalena.best@usda.gov	Agricultural Program Specialist	USDA FSA	
14	Mike	Brown	michael.s.brown@usda.gov	Farm Loan Chief	USDA FSA	
15	David	Wayne	dawayne@ncdot.gov	District engineer for NC DOT North Wilkesboro, Ashe & Wilkes	NC DOT	
Translator	Michelle	Pelayo	michellepelayo@ashecountygov.com	Migrant Education Program Coordinator / Farmworker Health Educator, Ashe County	NC State Extension	

2

WNC Nursery & Greenhouse

Updates from Helene

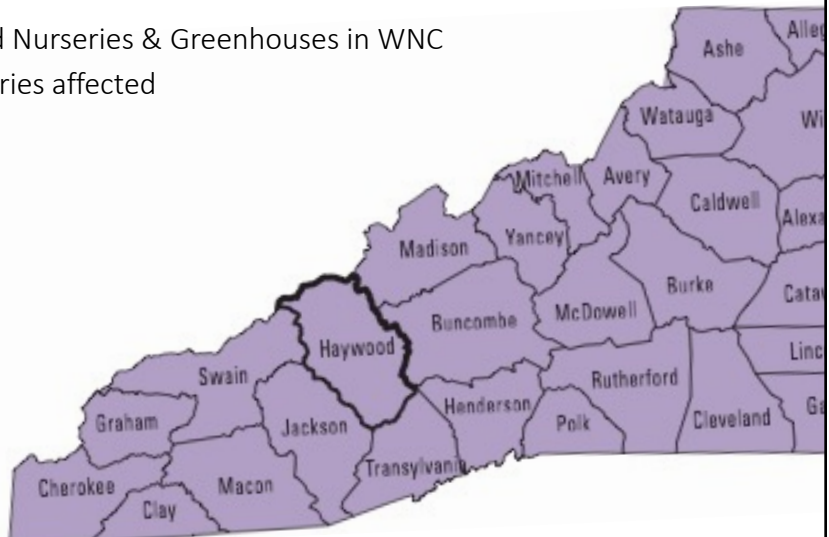
Sam Marshall, Area Specialized Agent



3

WNC Nursery & Greenhouse Demographics

- NC ranks 5th nationwide in nursery production; ~\$556 million in total horticulture sales
 - WNC accounts for ~\$150 million in sales annually
- 130 +/- registered and Certified Nurseries & Greenhouses in WNC
 - Approximately 1/4 of nurseries affected



4

WNC Nursery & Greenhouse Demographics

- NC ranks 5th nationwide in nursery production; ~\$556 million in total horticulture sales
 - WNC accounts for ~\$150 million in sales annually
- 130 +/- registered and Certified Nurseries & Greenhouses in WNC
 - Approximately 1/4 of nurseries affected
 - **Estimated losses as of 10/23 are ~\$125 million**
 - Affected Counties:
 - Avery: ~\$20 million in losses
 - Burke: ~40 million in losses
 - Caldwell: ~\$20 million in losses
 - McDowell: ~\$15 million in losses
 - Yancey: ~\$10 million in losses
 - Buncombe: ~\$5 million
 - Gaston: ~\$3 million
 - Henderson: Unknown



5

Short- and Medium-range needs

- ~~PPE~~
- ~~Blowers for cleaning out trees~~
- ~~Irrigation Equipment~~
- ~~Heavy equipment for rebuilding roads, etc.~~
- ~~Engine oil and hydraulic fluid~~
- ~~Water~~



Image Credit: Seth Nagy

6

Short- and Medium-range needs

Labor

- Nurseries are most likely not extending H2A contracts for their workers
 - *Expense*



7

Short- and Medium-range needs

Labor

- Nurseries are most likely not extending H2A contracts for their workers
 - *Expense*
- Work crews from other areas (where H2A contracts may be ending soon and/or reaching a 'slower' time of year?)



8

Short- and Medium-range needs

Labor

- Nurseries are most likely not extending H2A contracts for their workers
 - *Expense*
- Work crews from other areas (where H2A contracts may be ending soon and/or reaching a 'slower' time of year?)
- Need guidance on hiring **domestic labor** and any funds that are available from US or NC DOL
 - Individuals who can help nurserymen with the application process?



9

Thank you!

Jon Schwarz, Pender Pines Nursery

David Hoffman, Hoffman Nursery

David Edwards, Turtle Creek Nursery

Patrick Williams, Williams Plantworks

Jim Freeman, Freeman Landscapes

Sam Franklin, Franklin Nursery

NCNLA

Cherokee Manufacturing

Bobcat of Lenoir

James River Power Equipment, Wilkesboro

Blaze Carswell, Executive Assistant for Virginia Foxx

Destin Hall, Rep. Caldwell and Watauga Cos.

Donnie Potter, Caldwell County Commissioner

Danny Lauderdale, Area Agent, Eastern Region



10

Beth Rodman, Agricultural Safety and Health Bureau Chief
beth.rodman@labor.nc.gov

N.C. Department of Labor

Agricultural Safety and Health Bureau

Helene Response Resources for Farmers and Farmworkers

Presented by: Beth Rodman, Agricultural Safety and Health Bureau Chief



11

ASH Bureau's Role in NC

- Promote safe working conditions for farmers and farm workers through training and education.
- Inspect and certify migrant farmworker housing.
- Enforce the Occupational Safety and Health Standards through on-site compliance inspections.



12

NCDOL Resources

- **Employers**
 - General questions about workplace safety and health requirements can be submitted by email to ask.osh@labor.nc.gov or by phone at 919-707-7876.
 - Ag-specific questions, including questions about farmworker housing, can be submitted by phone at 919-707-7810.
 - To report a work-related injury or illness, call 919-779-8560 or online via NCDOL's [Online Reporting Form](#) (hospitalizations – 24 hours; fatalities – 8 hours)
- **Employees**
 - Workers can file a safety and health complaint by calling NCDOL's complaint desk at 919-779-8560 or online via NCDOL's [Online Complaint Form](#).
 - » Spanish-speaking farmworkers can call the ASH Bureau directly at 919-707-7820.
- **Other resources can be found on [NCDOL's Website](#)**



13

Contact Information

Agricultural Safety and Health Bureau

Main Line: 919-707-7820
 Beth Rodman: 919-707-7810
beth.rodman@labor.nc.gov

NCDOL Complaint Desk

919-779-8560
[Online Complaint Form](#)

NCDOL
 1-800-NC-LABOR
 (1-800-625-2267)
www.labor.nc.gov



14



DISASTER ASSISTANCE Noninsured Crop Disaster Assistance Program

Overview

The Noninsured Crop Disaster Assistance Program (NAP) administered by the U.S. Department of Agriculture (USDA) Farm Service Agency (FSA), provides financial assistance to producers of non-insurable crops to protect against natural disasters that result in lower yields or crop losses, or prevents crop planting.

Who Is Eligible?

Eligible Producers

An eligible producer is a landowner, tenant or sharecropper who shares in the risk of producing an eligible crop and is entitled to an ownership share of that crop. An individual's or entity's average adjusted gross income (AGI) cannot exceed \$900,000 to be eligible for NAP payments. Also, NAP payments received, directly or indirectly, will be attributed to the applicable individual or entity and limited to \$125,000 per crop year, per individual or entity for crops with basic (catastrophic) coverage. Any NAP payments received directly or indirectly for crops with additional (buy-up) coverage, will be attributed to the applicable individual or entity and limited to \$300,000 per crop year, per individual or entity. (To learn more, visit fsa.usda.gov/limits.)

Eligible Crops

Eligible crops must be commercially produced agricultural commodities for which crop insurance is not available and be any of the following:

- Crops grown for food;
- Crops planted and grown for livestock consumption, such as grain and forage crops, including native forage; Crops grown for fiber, such as cotton and flax (except trees);
- Crops grown in a controlled environment, such as mushrooms and floriculture;
- Specialty crops, such as honey and maple sap;
- Sea oats and sea grass;
- Sweet sorghum and biomass sorghum;
- Industrial crops, including crops used in manufacturing or grown as a feedstock for renewable biofuel, renewable electricity or biobased products;
- Value loss crops, such as aquaculture, Christmas trees, ginseng, ornamental nursery and turf-grass sod; and
- Seed crops where the propagation stock is produced for sale as seed stock for other eligible NAP crop production.



Producers should contact a crop insurance agent for questions regarding insurability of a crop in their county. For further information on whether a crop is eligible for NAP coverage, producers should contact the FSA county office where their farm records are maintained.

What Is Eligible?

Eligible Causes of Loss

Eligible causes of loss include the following natural disasters:

- Damaging weather, such as drought, freeze, hail, excessive moisture, excessive wind or hurricanes;
- Adverse natural occurrences, such as earthquake or flood; and
- Conditions related to damaging weather or adverse natural occurrences, such as excessive heat, plant disease, volcanic smog (VOG) or insect infestation.

The damaging weather or adverse natural occurrence must occur during the coverage period, before or during harvest, and must directly affect the eligible crop.

James Davis
Chief Price Support Division
Farm Service Agency
jamesa.davis@usda.gov



DISASTER ASSISTANCE

FACT SHEET
October 2019

Tree Assistance Program

Overview

The Tree Assistance Program (TAP) provides financial assistance to eligible orchardists and nursery tree growers to replant or rehabilitate eligible trees, bushes, and vines lost by natural disasters. TAP is administered by the Farm Service Agency (FSA) of the U.S. Department of Agriculture (USDA).

What Is Eligible?

Eligible Tree Types

Eligible trees, bushes, and vines are those from which an annual crop is produced for commercial purposes. Nursery trees include ornamental, fruit, nut and Christmas trees produced for commercial sale. Trees used for pulp or timber are not eligible for TAP assistance.



Eligible Losses

To be considered an eligible loss:

- A requisite death loss must first be sustained, a stand of eligible trees, bushes, or vines must have suffered more than a 15 percent mortality loss (after normal mortality) due to a natural disaster;
- Mortality loss on a stand of eligible trees, bushes, or vines is based on:
 - Each eligible disaster event, except for losses due to plant disease; and
 - For plant disease, the time period as determined by the FSA for which the stand is infected.
- The loss must not have been preventable through reasonable and available measures;
- The loss must be visible and obvious to the FSA representative; if the loss is no longer visible, FSA may accept other loss evidence and determine whether that other evidence substantiates that an eligible loss due to natural disaster occurred; and
- FSA may require information from a qualified expert to determine extent of loss in the case of plant disease or insect infestation.

Eligible Orchardists and Nursery Tree Growers

To qualify for TAP, eligible orchardists and nursery tree growers must:

- Have suffered a qualifying tree, bush or vine loss in excess of 15 percent mortality for the stand (adjusted for normal mortality) due to an eligible natural disaster;
- Have owned the eligible trees, bushes and vines when the natural disaster occurred, but eligible growers are not required to own the land on which owned eligible trees, bushes and vines are planted; and

James Davis
Chief Price Support Division
Farm Service Agency
jamesa.davis@usda.gov

DISASTER ASSISTANCE Emergency Loan Program

Overview

The U.S. Department of Agriculture's Farm Service Agency (FSA) provides emergency loans to help producers recover from production and physical losses due to drought, flooding, other natural disasters, or quarantine.

Loan Uses

Emergency loan funds may be used to:

- Restore or replace essential property;
- Pay all or part of production costs associated with the disaster year;
- Pay essential family living expenses;
- Reorganize the farming operation; and
- Refinance certain debts.

Who is Eligible?

Emergency loans may be made to farmers and ranchers who:

- Own or operate land located in a county declared by the President or designated by the Secretary of Agriculture as a primary disaster area or quarantine area. All counties contiguous to the declared, designated, or quarantined primary counties also are eligible for emergency loans. A disaster designation by the FSA Administrator authorizes emergency loan assistance for physical losses only in the designated and contiguous counties;
- Are established family farm operators and have sufficient farming or ranching experience;
- Are citizens or permanent residents of the United States;
- Have suffered a loss of production below the normal production yield of the crop or realized a physical loss to livestock, livestock products, real estate or personal property;
- Have an acceptable credit history;
- Are unable to receive credit from commercial sources;
- Can provide collateral to secure the loan; and
- Have repayment ability.



Loan Requirements

FSA loan requirements are different from those of other lenders. Some of the more significant differences are the following:

- Borrowers must keep acceptable farm records;
- Borrowers must operate in accordance with a farm plan they develop and agree to with local FSA staff; and
- Borrowers may be required to participate in a financial management training program and obtain crop insurance.

Collateral Is Required

All emergency loans must be fully collateralized. The specific type of collateral may vary depending on the loan purpose, repayment ability, and the individual circumstances of the applicant. If applicants cannot provide adequate collateral, their repayment ability may be considered as collateral to secure the loan. A first lien is required on property or products acquired, produced, or refinanced with loan funds.

www.farmers.gov

Mike Brown, Farm
Loan Chief
michael.s.brown@
usda.gov

FACT SHEET - OCTOBER 2024

17

EMERGENCY LOAN PROGRAM

2

Loan Limit

Producers can borrow up to 100 percent of actual production or physical losses to a maximum amount of \$500,000, excluding any duplicate payments such as crop insurance indemnity payment or other government payments.

Loan Terms

Loans for crop, livestock, and non-real estate losses are normally repaid within one to seven years, depending on the loan purpose, repayment ability, and collateral available as loan security. In special circumstances, terms of up to 20 years may be authorized. Loans for physical losses to real estate are normally repaid within 30 years. In certain circumstances, repayment may be made over a maximum of 40 years.

Current Interest Rates

To find the current emergency loan interest rate, visit fsa.usda.gov/farmloans.

Application Deadline

Applications for emergency loans must be received within eight months of the county's disaster or quarantine designation date.



For More Information

This fact sheet is for informational purposes only; other eligibility requirements or restrictions may apply. To find more information about FSA disaster assistance programs, visit farmers.gov or contact your local FSA office. To find your local FSA office, visit farmers.gov/service-center-locator.



www.farmers.gov

Mike Brown, Farm
Loan Chief
michael.s.brown@
usda.gov

FACT SHEET - OCTOBER 2024
USDA is an equal opportunity provider, employer, and lender.



18

Farm Loans Overview

Overview


The U.S. Department of Agriculture's Farm Service Agency (FSA) offers direct and guaranteed loans to farmers and ranchers to promote, build, and sustain family farms for a thriving agricultural economy.

Farm ownership, operating, and emergency loans are available under the Direct Loan Program. Farm ownership, operating, and conservation loans are available under the Guaranteed Loan Program. FSA offers two types of guarantees under the Land Contract Guarantee Program.

The goal of FSA's farm loan programs is to help farmers and ranchers obtain commercial credit. Once you are able to obtain credit from a commercial lender, our mission of providing temporary, supervised credit is complete.

Direct Farm Loans

FSA's Direct Loan Program is designed to help farmers start, purchase, or expand their farming operation. From beginning farmers who have limited financial history to qualify for commercial credit to farmers who have suffered financial setbacks from natural disasters, FSA offers a variety of loans to provide additional resources farmers need to establish and maintain profitable farming operations. Farmers may apply for direct loans at their local FSA offices.



OCTOBER 2024

Guaranteed Farm Loans

FSA guaranteed loans are available to farmers who may not meet loan qualifications from a commercial lender. Guaranteed loans are made and serviced by commercial lenders, such as banks, Farm Credit System institutions, or credit unions. Under a guaranteed loan, a commercial lender makes and services the loan, and FSA guarantees it against loss up to a maximum of 90 percent in most cases or 95 percent in limited circumstances. FSA approves eligible loan guarantees and provides oversight of lenders' activities. Contact a local FSA office for a list of participating lenders.

Farm Ownership Loans

Farm Ownership Loans may be used to purchase a farm, enlarge an existing farm, construct new farm buildings and/or improve structures, pay closing costs, and promote soil and water conservation and protection. The direct loans are available up to a maximum of \$400,000. Microloans are also available. FSA will guarantee farm ownership loans through a commercial lender up to \$2,251,000. The maximum repayment term is 40 years for both direct and guaranteed farm ownership loans.

Farm Operating Loans

Farm Operating Loans may be used for normal operating expenses, machinery and equipment, minor real estate repairs or improvements, and refinancing debt. The direct loans are available up to a maximum of \$400,000. Microloans are also available. FSA will guarantee farm operating loans through a commercial lender up to \$2,251,000. The repayment term may vary, but it cannot exceed seven years. Annual operating loans are generally repaid within 12 months or when the commodities produced are sold.

www.farmers.gov

Mike Brown, Farm Loan Chief
michael.s.brown@usda.gov

19

FARM LOANS OVERVIEW - OCTOBER 2024
2

Direct operating loans require applicants to have sufficient education, training, or at least one year's experience in managing or operating a farm or ranch within the last five years.

Down Payment Program

The Down Payment loan assists socially disadvantaged and beginning farmers in purchasing a farm.

Requirements:

- The applicant must make a cash-down payment of at least 5 percent of the purchase price;
- The maximum loan amount does not exceed 45 percent of the least of the purchase price of the farm to be acquired, the appraised value of the farm to be acquired or \$667,000 (Note: This results in a maximum loan amount of \$300,150);
- The term of the loan is a maximum of 20 years. The interest rate is 4 percent below the direct farm ownership rate, but not lower than 1.5 percent;
- The remaining balance may be obtained from a commercial lender or private party. FSA can provide up to a 95 percent guarantee if financing is obtained from a commercial lender. Participating lenders do not have to pay a guarantee fee
- Financing from participating lenders must have an amortization period of at least 30 years and cannot have a balloon payment due within the first 20 years of the loan.

Youth Loans

Youth loans may be made to young persons who are sponsored by a project advisor, such as a 4-H club, FFA, tribal youth organization, or similar agriculture affiliated group. The project must provide an opportunity for the young person to acquire experience and education in agriculture-related skills. These loans are only available as direct loans with a maximum loan amount of \$10,000. Youth loans are available to those between the ages of 10 and 20 years at the time of loan closing.



Emergency Loans

Emergency loans help farmers and ranchers who have suffered a loss caused by natural disasters that damaged their farming or ranching operation.

Emergency loan funds may be used to restore or replace essential property, pay all or part of production costs associated with the disaster year, pay essential family living expenses, reorganize the farming operation, and refinance certain debts. The county or counties where the farm is located must be declared a disaster area by the President or designated by the Secretary of Agriculture. For production loss loans, applicants must demonstrate a 30 percent loss in a single farming enterprise. Applicants may receive loans up to 100 percent of production or physical losses.

www.farmers.gov

Mike Brown, Farm Loan Chief
michael.s.brown@usda.gov



20

FARM LOANS OVERVIEW - OCTOBER 2024
3

These loans are only available as direct loans from FSA with a maximum loan amount of \$500,000.

Conservation Loans

Conservation Loans provide access to credit for farmers and ranchers who want to implement conservation measures on their land. These loans are available to both smaller and less financially established farmers and ranchers, and to larger and financially stronger farmers and ranchers. The family farm and test for credit requirements are not applicable to Conservation Loans.

Farmers and ranchers may use conservation loans to complete any conservation activity included in a USDA approved conservation plan or Forestry Management Plan. The maximum loan amount is \$2,251,000 with a maximum repayment term of 30 years. Conservation Loans are available as guaranteed loans only.

Loans for Beginning and Socially Disadvantaged Farmers

Each year, Congress targets a percentage of farm ownership and farm operating loan funds to beginning and socially disadvantaged farmers. Providing loan programs is important as these groups of farmers have historically experienced more difficulties obtaining financial assistance. FSA offers several loan programs to assist beginning and socially disadvantaged farmers (refer to the fact sheets titled Loans for Socially Disadvantaged Farmers and Ranchers and Loans for Beginning Farmers and Ranchers). FSA's Down Payment Program is offered to assist socially disadvantaged and beginning farmers in purchasing a farm with a maximum loan amount of \$300,150.

Land Contract Guarantees

FSA also offers financial guarantees for land sale contracts to a beginning or socially disadvantaged farmer. The seller may request either of the following:

- Prompt Payment Guarantee: A guarantee up to the amount of three amortized annual installments plus the cost of any related real estate taxes and insurance.
- Standard Guarantee: A guarantee of 90 percent of the outstanding principal balance under the land contract.

The purchase price of the farm cannot exceed the lesser of \$500,000 or the market value of the property.

The buyer must provide a minimum down payment of 5 percent of the purchase price of the farm. The interest rate is fixed at a rate not to exceed the direct farm ownership loan interest rate in effect at the time the guarantee is issued, plus three percentage points. The guarantee period is 10 years for either plan regardless of the term of the land contract. The contract payments must be amortized for a minimum of 20 years. Balloon payments are prohibited during the 10-year term of the guarantee.


Who is Eligible

Eligibility requirements:

- Be a family farmer;
- Have a satisfactory credit history;
- Be a citizen of the United States, including Puerto Rico, the U.S. Virgin Islands, Guam, American Samoa, Commonwealth of the Northern Mariana Islands, Republic of Palau, Federated States of Micronesia and the Republic of Marshall Islands; a U.S. non-citizen national or a qualified alien under federal immigration law;
- Be unable to obtain credit elsewhere at reasonable rates and terms to meet actual needs;
- Have the legal capacity to incur the obligations of the loan;
- Not have outstanding unpaid judgments obtained by the U.S. in any court, excluding judgments filed in U.S. Tax Courts;

www.farmers.gov

Mike Brown, Farm Loan Chief
michael.s.brown@usda.gov



USDA is an equal opportunity provider, employer, and lender. fsa.usda.gov

21

FARM LOANS OVERVIEW - OCTOBER 2024
4

- Not be delinquent on a federal debt;
- Must not have provided FSA with false or misleading documents or statements in the past;
- Not have been convicted under federal or state laws of planting, cultivating, growing, producing, harvesting, or storing a controlled substance within the last 5 crop years;
- Not have received debt forgiveness from FSA (certain exceptions apply); and
- Be within the time restrictions as to the number of years they can receive FSA assistance.

Applications may also be made by entities. Entities are corporations, cooperatives, joint operations, partnerships, trusts, and limited liability companies. Their members/stockholders must meet these same eligibility requirements. The entity must also be authorized to operate a farm or ranch in the state where the land is located.

For socially disadvantaged members, they must hold a majority interest in the entity applicant to receive targeted funding

Working with Farmers and Ranchers

FSA does more than just provide credit - it works with farmers and ranchers to identify strengths and opportunities for improvement in farm production and management. FSA helps farmers and ranchers find alternative options, so they can achieve success. Learning and improving business planning and financial insight through FSA's credit management is the difference between success and failure for many farm families.

FSA works to keep farmers and ranchers farming. FSA may be able to support direct loan borrowers whose accounts are distressed or delinquent, including:

- Re-amortization, rescheduling, consolidation, and/or deferral of loans;
- Rescheduling at a lower interest rate;

- Acceptance of conservation contracts on environmentally sensitive land in exchange for reduction of debt; and
- Writing down the debt.

If none of these options results in a feasible farm operating plan, FSA will work with borrowers to determine if they are eligible for consideration to retain the homestead and up to 10 acres. Borrowers may be offered the opportunity to pay off their debt for an amount below the full debt if that amount represents the market value of the loan collateral.


Farms that come into FSA ownership are sold at market value, with preference given to socially disadvantaged and beginning farmers.

More Information

For more information visit, fsa.usda.gov/farmloans or farmers.gov. Find your local USDA Service Center at farmers.gov/service-locator

www.farmers.gov

Mike Brown, Farm Loan Chief
michael.s.brown@usda.gov



USDA is an equal opportunity provider, employer, and lender. fsa.usda.gov

22

11

Dulce Arroyo, Agricultural Partner Engagement Coordinator dulce.arroyo@dhhs.nc.gov

Clinicas de Salud para Trabajadores Agrícolas en Carolina del Norte • Farmworker Health Clinics in North Carolina

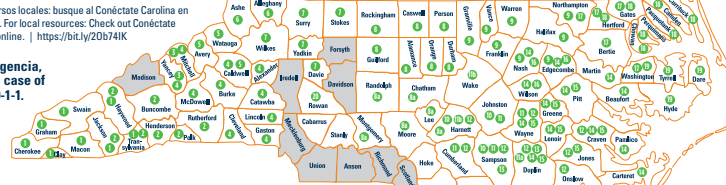
NOTA: Busque al condado donde vive Ud. en el mapa. El número en cada condado indica el número de la clínica más cercana a Ud. en la lista de clínicas. Los contactos principales para los programas de salud para trabajadores agrícolas se muestran en **negrita** a continuación.

NOTE: Look for the county where you live on the map. The number in each county corresponds to the closest clinic to you in the list of clinics. Primary contacts for farmworker health programs are shown in **bold** below.



Para recursos locales: busque al Conéctate Carolina en el Internet. For local resources: Check out Conéctate Carolina online. | <https://bit.ly/20b74IK>

En caso de emergencia, llame al 9-1-1. In case of emergency, dial 9-1-1.



- | | | | |
|--|---|--|---|
| <p>1. Vacinos, Inc.
Ciudad/city: Sylva
Yolanda Pinzon: (828) 707-3848
General: (828) 293-2274</p> <p>2. Blue Ridge Health
Ciudad/city: Hendersonville
Keneth Melgar: (828) 233-2204
General: (828) 692-4289</p> <p>3. Mountain Community Health Partnership
Ciudad/city: Bakersville
Amber Dillinger: (828) 688-6021
General: (828) 688-2124</p> <p>4. Good Samaritan Clinic
Ciudad/city: Morganton
Karina Lopez: (828) 493-6178
General: (828) 212-4185</p> <p>5. High Country Community Health
Ciudad/city: Boone
Derrick Vole: (828) 789-9386
General: (828) 262-3886</p> <p>6. AppHealthCare
Ciudad/city: Jefferson/Sparta
Erin Torres: (336) 572-1097
General: (336) 246-9449</p> | <p>7. Surry Medical Ministries
Ciudad/city: Mount Airy
Nereyda Valencia: (336) 401-2450
General: (336) 789-5058</p> <p>8. Piedmont Health Services
Ciudad/city: Prospect Hill
Maria Guerrero: (336) 583-1004
General: (336) 562-3311</p> <p>8a. Black River Health Services
Ciudad/city: Moncure
Stephanie Toledo: (919) 429-4659
General: (919) 542-4891</p> <p>9. Rural Health Group
Ciudad/city: Henderson
Jessica Orellana: (919) 339-2608
General: (252) 438-3549</p> <p>10. Commwell Health
Ciudad/city: Newton Grove
Andrea Morales Williams: (877) 835-5255
General: 1-877-835-5255</p> <p>11. NC Farmworkers Project
Ciudad/city: Dunn
Condado/county: Sampson, Johnston
Janeeth Tapia: (919) 915-2220</p> <p>11a. Condado/county: Duplin
Maria Mejia: (919) 915-9991</p> | <p>11b. Condado/county: Harnett, Wake
Bahiana Correa: (919) 823-8270</p> <p>12. Goshen Medical Center
Ciudad/city: Faison
Rose Beasley: (910) 935-0767
General: (910) 267-0421 ext. 1140</p> <p>13. Black River Health Services/Manos Unidas
Ciudad/city: Atkinson
David Gasca: (910) 445-0783
General: (910) 665-9141</p> <p>14. CONTENTNEA Health
Ciudad/city: Snow Hill
Francisco Limon: (252) 747-2921 ext. 2400
General: (252) 747-2921</p> <p>15. Kingston Community Health Center, Inc.
Ciudad/city: Kinston
Anna Kinsey: (252) 286-6276
General: (252) 522-8800</p> | <p>16. Carolina Family Health Centers, Inc.
Ciudad/city: Wilson
Alma Alcantar: (252) 243-8800 ext. 263
General: (252) 293-0013</p> <p>17. Roanoke Chowan Community Health Center
Ciudad/city: Ahoskie
Bryan Madere: (252) 642-4188
General: (252) 332-3548</p> <p>18. Gateway Community Health Center, Inc.
Ciudad/city: Elizabeth City
Marisela Antonacci: (252) 333-1047</p> <p>19. Engelhard Medical Center
Ciudad/city: Engelhard
Candy Gutierrez: (252) 542-9475</p> <p>20. Cabarrus Rowan Community Health Centers, Inc.
Ciudad/city: China Grove
Britt Payne: (704) 792-2242</p> |
|--|---|--|---|

North Carolina Farmworker Health Program • <https://ncfhp.ncdhhs.gov/> • NCDHHS is an equal opportunity employer and provider. • 10/2024

NC STATE UNIVERSITY



**NORTH CAROLINA
AGROMEDICINE INSTITUTE**

Partners in Health and Safety •
Helping Farmers and Farmworkers Thrive

**Hurricane Helene Relief &
Recovery Resources provided by
the NC Agromedicine Institute**



Hurricane Helene WNC Farm Clean Up PPE Request Form
Use this form to request Personal Protective Equipment (PPE) for farm clean up efforts. This service is provided in partnership with Appalachian Regional Healthcare. Complete request form URL: go.ncsu.edu/wncfarmppe





Specialty crop farms can receive up to \$4,500* to make health and safety improvements, including field sanitation, fee-for-service to clean/sanitize work sites and/or transportation, generators, & more!



**NC
Specialty Crop**
Block Grant Program

Cost-share program application & eligibility URL: go.ncsu.edu/hasscc



MHIC

For more grant information and contact, visit URL: go.ncsu.edu/mhic





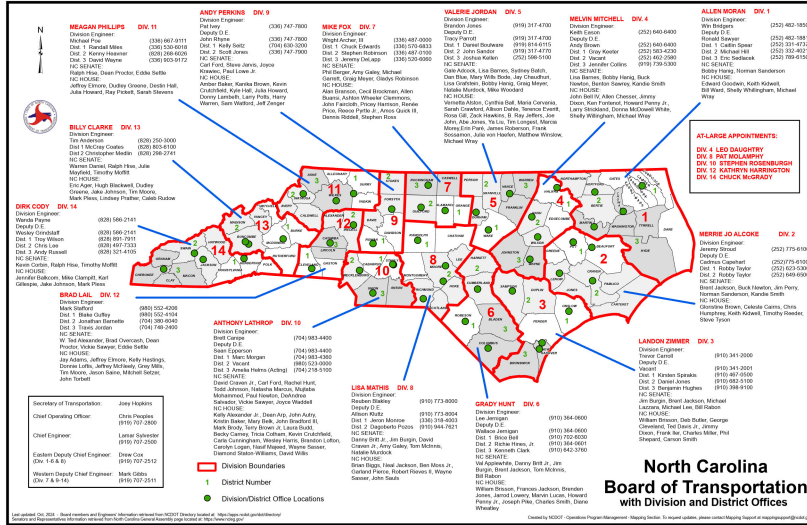
FARM STRESS ASSISTANCE NETWORK

NC Farm Help Line
844.325.3276



The Farm and Ranch Stress Assistance Network of NC (FRSAN-NC) provides support services to agricultural communities. Call the NC Farm Help Line to connect with resources including mental, financial, legal, Cooperative Extension, farm safety & health, and other services available to farmers, farmworkers, farm families, and others in the agricultural community. Available 24/7! Farmers and ranchers can also access mental health counseling and related services. Costs can be fully covered if using a participating provider. We'll help you find a provider with agricultural experience and training to meet your needs. To fill out an intake form for counseling services affiliated with FRSAN-NC, scan the QR code (left) or visit the URL: go.ncsu.edu/FarmStressCounseling

NC STATE UNIVERSITY



NC STATE UNIVERSITY

Truck Routing Applications - 10/18/2024

1. Sygic Truck & Caravan GPS Navigation

- Features: Offline maps, voice-guided navigation, truck-specific routing, POIs for truck stops and weigh stations, speed limit alerts.
- Platforms: Android and iOS.
- Subscription Cost: Offers a free version with limited features; premium features available through in-app purchases or subscriptions. A one-year subscription for premium features is typically around \$149.99.
- Website: sygic.com
- Features: Offline maps, truck-specific routing, voice-guided navigation, speed limit alerts.

2. Trucker Path

- Features: Identifies truck stops, weigh stations, fuel stops, and parking; trip planning; community-driven updates.
- Platforms: Android and iOS.
- Subscription Cost: Free with optional premium features for fleet management and advanced functionalities, typically costing around \$29.99/month for the enterprise edition.
- Website: truckerpath.com
- Features: Truck stops, weigh stations, fuel prices, real-time parking availability, trip planning.

3. PTV Navigator

- Features: Truck-safe route planning that considers road restrictions, real-time traffic updates, avoidance of toll roads.
- Platforms: Android only.
- Subscription Cost: Pricing varies based on the region and features; generally starts around \$100/year.
- Website: ptvgroup.com
- Features: Truck-safe route planning, real-time traffic updates, avoidance of toll roads

4. SmartTruckRoute

- Features: Truck-specific routes with turn-by-turn navigation, lane guidance, live map updates.
- Platforms: Android and iOS.

- Subscription Cost: Free basic version; premium subscription options available starting at approximately \$10/month.
- Website: smartruckroute.com
- Features: Truck-specific routes, turn-by-turn navigation, lane guidance, live map updates.
- CoPilot GPS
- Website: copilotgps.com
- Features: Offline maps, customizable vehicle profiles, truck-specific routing, traffic information, and turn-by-turn navigation.

6. Navigator Truck by MapFactor

- Features: Offline navigation using TomTom maps tailored for trucks, customizable vehicle settings to account for height and weight restrictions.
- Platforms: Android and Windows.
- Subscription Cost: Free version available; premium features can be unlocked via a one-year subscription starting around \$49.99
- Website: mapfactor.com
- Features: Offline navigation using TomTom maps tailored for trucks, customizable vehicle settings.

7. CoPilot GPS

- Website: copilotgps.com
- Features: Offline maps, customizable vehicle profiles, truck-specific routing, traffic information, and turn-by-turn navigation.