

Basics of Sheep and Goats

USDA-NRCS Livestock 101



Kyle Rozeboom
Livestock Specialist
U of Minnesota
Department of Animal Science



- **U.S. Sheep Industry**

According to the last (2022) Census of Agriculture, there are 88,853 sheep farms in the United States.

- Large sheep operations, which own 80 percent of the sheep, are located primarily in the Western United States. Texas and California have the most sheep.
- Small producers, those owning less than 100 sheep, comprise the majority of sheep operations, but own only 17 percent of the sheep.

Top Sheep Inventory Countries (2025)

Rank	Country	Sheep Population (millions)
1	China	194.0
2	India	75.0
3	Australia	70.0
4	Iran	55.0
5	Nigeria	50.0
6	Chad	45.0
7	Turkey	44.0
8	Sudan	41.0
9	Ethiopia	35.0
10	United Kingdom	33.0
22	United States	5.05
25	Canada	3.5

References:

World Population Review. (2025). Sheep population [by country](https://worldpopulationreview.com/country-rankings/sheep-population-by-country). Retrieved from <https://worldpopulationreview.com/country-rankings/sheep-population-by-country>

USDA National Agricultural Statistics Service. (2025). Sheep and Goats Report. Retrieved from <https://downloads.usda.library.cornell.edu/usda-esmis/files/000000018/zk51xc07n/9593wq66x/shep0125.pdf>

Top 10 Goat Inventory Countries Including United States (2025)

Rank	Country	Goat Population
1	India	148,880,000
2	China	133,000,000
3	Nigeria	88,037,053
4	Pakistan	82,503,000
5	Bangladesh	60,000,000
6	Ethiopia	49,323,166
7	Chad	46,438,592
8	Kenya	34,529,910
9	Sudan	32,598,924
10	Mali	27,832,624
52	United States	2,599,390

References

World Population Review. (2025). Goat population by country. Retrieved from <https://worldpopulationreview.com/country-rankings/goat-population-by-country>

WorldoStats. (2025). Goat inventory statistics. Retrieved from <https://worldostats.com/country-stats/goat-population-by-country/>

FAOSTAT. (2025). Food and Agriculture Organization of the United Nations. Livestock Primary. Retrieved from <http://www.fao.org/faostat/en/#data/QL>

State ranking of the total number of sheep and lambs (Jan 2025)

1. Texas 670,000	2. California 510,000
3. Colorado 405,000	4. Wyoming 300,000
5. Utah 280,000	6. Idaho 235,000
7. S. Dakota 205,000	8. Montana 185,000
9. Iowa 161,000	10. Oregon 150,000
11. Ohio 145,000	12. Minnesota 113,000

As of Jan. 31, 2025, there were 5.05 million head of sheep in the United States

Source: USDA, NASS, Sheep & Goats, Jan. 31, 2025

Why raise sheep or goats?

- Can convert weeds, brush, grass, other plants into products (meat, milk, fiber) for human needs.
- Are highly adaptable and noncompetitive with humans for food.
- Sheep farming is not a "get-rich-quick" scheme. However, at times profit per acre can be the same for sheep and cows, and can often be higher for goats
- Easier to get started due to less equipment needed
- For some, it is a hobby, retirement activity, or 4-H project

Sheep Production

Terms for understanding

- **Sheep** are over one year of age. They have usually produced offspring. **Lambs** are less than one year of age. **Lamb** is also the term for the flesh of a young domestic sheep eaten as food.



Sheep Production

Terms for understanding

- **Ram** – non-castrated male sheep
- **Wether** – castrated male sheep
- **Ewe** – female Sheep

Dodge ram 2500
Contact Seller

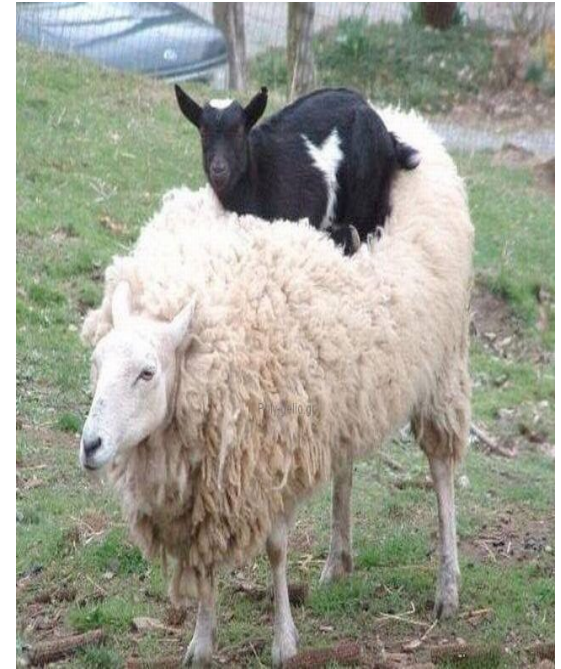
MESSAGE

Dodge ram 2500 for sale, 600k miles runs like new. 15k firm. Don't low ball me I know what I have.



Separating the Sheep from the Goats

- While sheep and goats have many similarities, they are two distinct species and genus. Sheep (*Ovis Aries*) have 54 chromosomes, while goats (*Capra Hircus*) have 60.
- Fertile sheep-goat hybrids are rare. Hybrids made in the laboratory are called chimeras.



Sheep say baa Goats say maa

Separating the Sheep from the Goats

Look at Their Tails

- **The easiest way to tell the difference between a sheep and a goat is to look at their tails.**
- **A goat's tail will go up (unless the goat is frightened, sick, or in distress).**
- **Sheep tails hang down and are often docked (cut off) for health and sanitary reasons.**



Grazing vs. Browsing

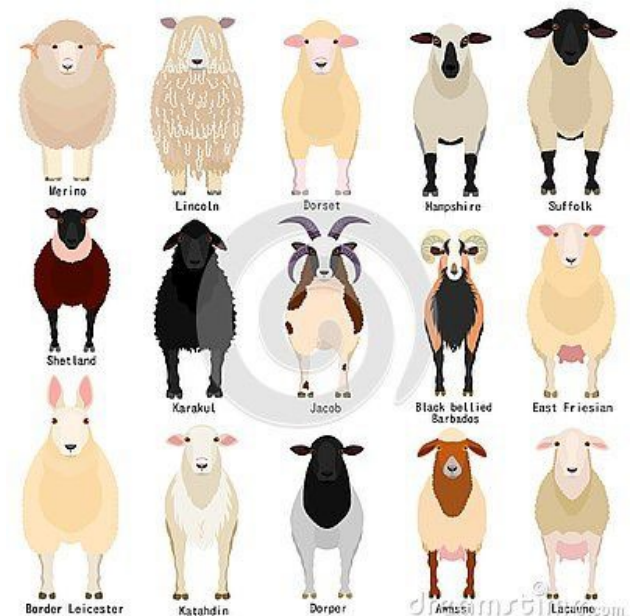
- One of the biggest differences between sheep and goats is their feeding behavior and diet selection.
- Goats are natural **browsers**, preferring to eat leaves, twigs, vines, and shrubs. They are very agile and will stand on their hind legs to eat vegetation.
- Sheep are **grazers**, preferring to eat short, tender grass and clover. They like weeds and can graze very close to the soil surface.





Sheep Breed Categories

- Wool Type: white wool only, better quality
- Meat Type: any black wool
- Dual Purpose: white wool, but better meat than wool types
- Hair Sheep
- Fat-tailed/Fat-rumped Sheep
- Dairy



Suffolk



- Medium Wool Breed
- Mainly used for meat
- England- Imported US 1888
- White Wool with *solid* black face and legs
- Large Frame- fast growing
- Terminal sires

Hampshire



- Medium wool breed
- Used mainly for meat
- England- First imported U.S. 1840
- White wool with black face and legs,
- Possess wool cap and leg wool
- Med to large frame- rapid growth rate
- Uses as terminal sires

Southdown



- Medium wool breed
- Used mainly for meat
- White with a mousey brown face and leg
- England-one of oldest sheep breeds in world
- Imported U.S. 1803
- Small framed-Thick blocky yet slow growing
- Popular show-breed

Ramboulliet



- Finewool breed
- Used for meat and wool production
- France- Imported U.S about 1840
- White with a white face and legs
- Large framed- average muscle
- Popular use in western states crossbreds
 - (About ½ of crossbreds in US carry come Ramboulliet blood)



Dorset



- Medium wool breed
- Used for meat and Mothering ability
- England- Imported US about 1887
- White with white face
- Medium size
- Both Polled and Horned
- Can breed out of season

Hair Sheep

- Lack wool and are covered with hair instead.
- Found mostly in Africa and the Caribbean, but are also raised in temperate climates such as the U.S. and Canada.
- There are 20 breeds of sheep recognized as being hair sheep
- Comprise about 10 percent of the world sheep population.
- Fastest growing segment of the American sheep industry.
- Slow growing, lighter muscled yet leaner than traditional breeds.



Fat-tailed/Fat-rumped Sheep

- Named because they can store large amounts of fat in the tail and the region of the rump.
- Found for the most part in the extremely arid regions of Africa, the Middle East, and Asia.
- They often produce wool, but are raised primarily for meat (lamb or mutton) or milk. Fat-tailed sheep make up about 25 percent of the world sheep population.
- While there are no "true" fat-tailed sheep breeds in the U.S., several breeds have fat-tailed origins: Karakul, Tunis, and Dorper.



The U.S Goat Industry

1. Meat - 1.98 million (79%)

2. Dairy- 430,000 (17%)

3. Fiber – 102,000 (4%)

Total: 2.51 million



These figures are sourced from the USDA National Agricultural Statistics Service's January 2025 Sheep and Goats report.

Boer Goats

- The development of the Boer goat in the early 1900's can be traced to the Dutch farmers of South Africa. Boer is a Dutch word meaning farmer.
- The first full-blood Boers were brought into the United States in 1993
- The demand for goat meat by the ethnic consumers one of the underlining forces behind the development of the American meat goat industry.
- The Boer goat is commonly a goat with a white body and a red head. Docile, muscular and fast growing.



Dairy Goats

- There are six types of dairy goats that are recognized by the American Dairy Goat Association.
--Nubians, LaManchas, Alpines, Oberhaslis, Toggenburgs, and Saanens.
- Goat milk is used for human consumption.

“It's been claimed that more than 65 percent of the world's population drinks goat milk ”

- Goat milk is similar nutritionally to cow milk,
- Contains smaller fat globules and is easier for some people to digest and it does not require homogenization.



Angora Goats

- Angora goats are excellent producers of fine quality fleece.(Mohair)
- Angora fleece grows about one inch per month
- On average mature goats will produce 5-8 pounds of hair annually. (2025)
\$6.48 per lb
- As the goats become mature and larger, their fleece becomes coarser and less valuable.



Sheep and Goat Reproduction

- Seasonal breeders – Generally breed in early fall as day length shortens
- Ewe lambs and Does usually 8-9 months old when first bred. Some producers wait until year old to first breed.
- Males can service 12-15 females as a lamb, and up to 100 as a yearlings
- Most common = 3 adult males / 100 females

Sheep and Goat Reproduction

- Marking harness - Male marks back of female with a crayon when mating
- Change crayon colors every 17 days in sheep, if ewes are rebred, the first time was not successful
 - may have a bad ram or ewe

Ram Marking Harness



Sheep and Goat Reproduction

- **Estrus** – Occurs every 17 days (21 for goats) and last for 2- 3 days
- **Gestation Period** – 148 d Sheep
150 d Goats



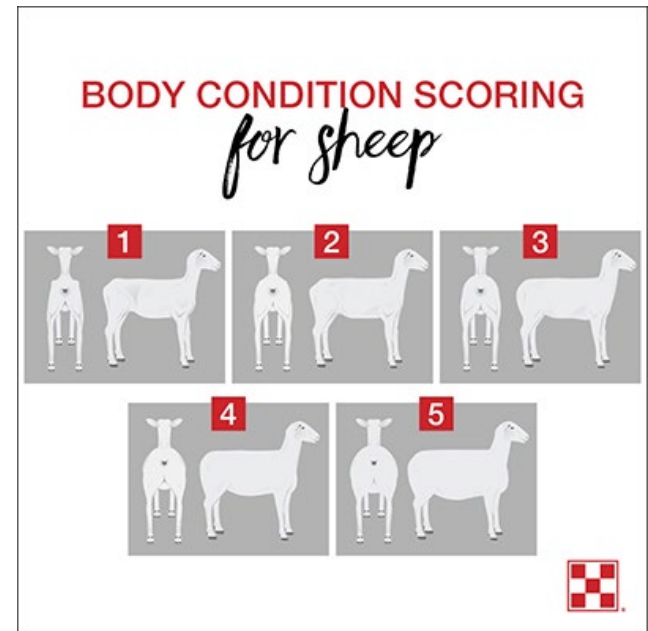
Sheep and Goat Reproduction

- **Females usually give birth to 1 to 3 offspring at each birth. Twin births (two babies) is most common in well-managed flocks, though first time mothers are more likely to have single lambs.**
- **Females produce their largest litters of offspring when they are between 3 and 6 years of age.**



What is Body Condition Scoring (BCS) in Sheep?

- **Definition:** A practical tool used to assess the fat and muscle reserves of sheep by palpating specific areas of the body.
- **Purpose:**
 - Monitor nutritional status
 - Guide feeding decisions
 - Improve flock productivity and welfare
- **Scoring Scale:** 1 to 5 scale
1 = Emaciated, 3 = Ideal, 5 = Obese



How to Perform a BSC

Palpation is critical – fleece can conceal condition

Steps:

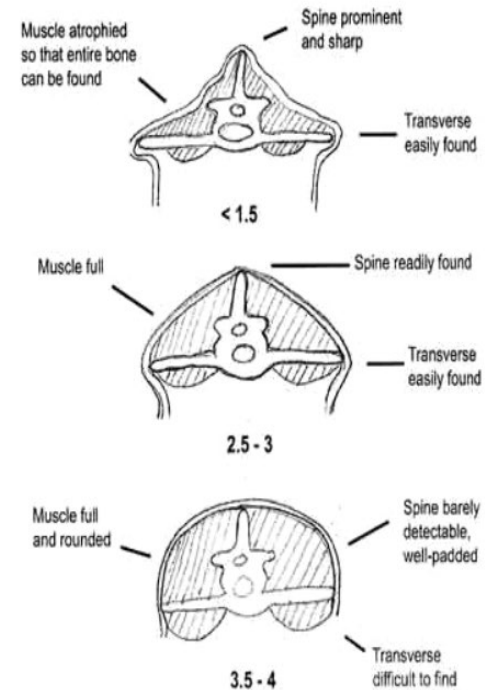
1. Place hand over **loin area** behind the last rib
2. Feel the **spine (spinous processes)** – assess sharpness or coverage
3. Feel **transverse processes** – degree of fat/muscle coverage
4. Score from 1 to 5, including half points (e.g., 2.5)

Scoring Guide:

Score 1: Sharp spine, no fat

Score 3: Smooth spine, moderate fat cover

Score 5: Can't feel spine, excessive fat



BCS in Flock Management

When to Score:

- Pre-breeding
- Mid-gestation
- Pre-lambing
- Weaning

•Target Scores:

- Breeding ewes: 2.5–3.5
- Lambing: 3.0–3.5 Weaning 2.5
- Rams pre-breeding: 3.5–4.0

•Benefits:

- Improved reproductive performance
- Better lamb survival
- More efficient feeding

•Challenges:

- Requires training and consistency
- Could be Time and labor intensive



Figure 4. BCS 4.0 for the ewe on left compared to 2.0 for the ewe on the right.

Ruminants like cattle

Grass, Grass, and More Grass

- Mostly, sheep eat grass, clover, weeds, and other pasture plants.
- Sheep especially love to eat "weeds." In fact, weeds are their first choice of food in a pasture. Weeds or "forbs" can be very nutritious and tasty!
- Sheep prefer plants that are young and tender and will graze close to the ground.
- Sheep will graze for an average of seven hours per day, mostly in the hours around dawn and in the late afternoon, near sunset.

Sheep Feeding



When the grass runs out . . .

- **When fresh forage is not available, sheep are usually fed stored feed: hay or silage.**
- **Hay is grass that has been mowed (cut) and cured (dried) and stored in bales.**
- **Silage or haylage is green forage that has been fermented and stored in a silo or other system that keeps air out.**

Sheep Feeding



Grain Provides Extra Energy

- **Grain is often fed to sheep with higher nutritional needs, such pregnant ewes, ewes nursing two or more lambs, and growing lambs.**
- **A protein source, such as soybean or cottonseed meal is usually added to the grain ration, along with vitamins and minerals to make a 100% nutritionally balanced ration.**

Sheep Feeding Across Life Stages

- Lambs:
 - Colostrum critical at birth
 - Creep feeding at 2–3 weeks
- Growing Lambs:
 - High-energy, moderate protein diet
 - Pasture + grain supplementation
- Pregnant Ewes:
 - Early: maintenance diet (often pasture or hay alone)
 - Late: more energy & protein for fetal growth
- Lactating Ewes: High demand for energy & protein
- Rams: Maintain moderate condition; avoid overfeeding



What kinds of products do we get from sheep and Goats?

Meat (Lamb and Mutton)

- The most important product we get from sheep and goats is meat.
- **Lamb** is the meat from a sheep that is less than one year old while **mutton** is the meat from a sheep that is over one year old.



What kinds of products do we get from sheep?

World Meat Consumption 2024

Rank	Meat Type	Global Consumption (Million Tons)	Percentage of Total Meat Consumption
1	Chicken (Poultry)	146	39.1%
2	Pork	124.6	33.4%
3	Beef (Cattle)	69.4	18.6%
4	Sheep (Lamb)	11.5	3.1%
5	Goat	7.4	2.0%
6	Buffalo	7.1	1.9%
7	Duck	7.0	1.9%
8	Turkey	5.2	1.4%
9	Goose	5.2	1.4%
10	Horse	0.81	0.2%



Note: Percentages are approximate and based on total global meat consumption. These figures are sourced from the FAO Statistical Database.

EAT MORE LAMB!



Packed Full of Good Nutrition

- Lamb is a prime source of high-quality protein, vitamins, and minerals.
- A 3-ounce serving of lamb provides 48% of an adult male's Recommended Daily Allowance (RDA) for protein.
- Lamb is also high in B vitamins, niacin, zinc, and iron. Red meats, especially lamb and beef, are amongst the best sources of absorbable iron.

EAT MORE LAMB!

GOOD FAT

- Compared to other meats, lamb contains very little internal fat. Since most lamb fat is on the outside edges of the meat, it is easily trimmed. That means fewer calories -- only 176 in an average 3-ounce serving.
- 64% of the fat in lamb is mono or polyunsaturated, the "good" fat in one's diet.
- Lamb is one of the richest sources of **conjugated linoleic acid (CLA)**. CLA possesses unique and potent antioxidant activity. It is produced naturally in the stomachs of herbivores (plant eaters), such as sheep and cows. CLA cannot be manufactured in the human body.

Lamb is a favorite among chefs!



EAT MORE LAMB!

****35 % of Americans have never eaten Lamb**

Top Lamb Consumption Countries (2024)

Rank	Country	Lamb Consumption (lb/person/year)
1	Mongolia	145
2	New Zealand	79
3	Australia	66
4	Greece	55
5	Cyprus	49
36	United States	1.1



Source: EssFeed (2025). Top 10 Countries With the Highest Sheep Meat Consumption Per Capita. Retrieved from <https://essfeed.com/top-10-countries-with-the-highest-sheep-meat-consumption-per-capita>

What kinds of products do we get from sheep?

- Wool is widely used in clothing from knitwear such as socks and jumpers to cloth used for suits and costumes.
- Used in the furniture trade for upholstery.
- Better carpets produced internationally with wool. Wool is used to fill mattresses.
- It is used in a diverse way for things such as tennis ball covers, and pool table cloth.



Wool

- One sheep produces anywhere from 2 to 30 lbs. of wool annually.
- The average fleece weight in the United States is **7.0 lbs.** per sheep (per year).
- The wool from one sheep is called a "fleece."
- Lambs produce less wool than mature animals.



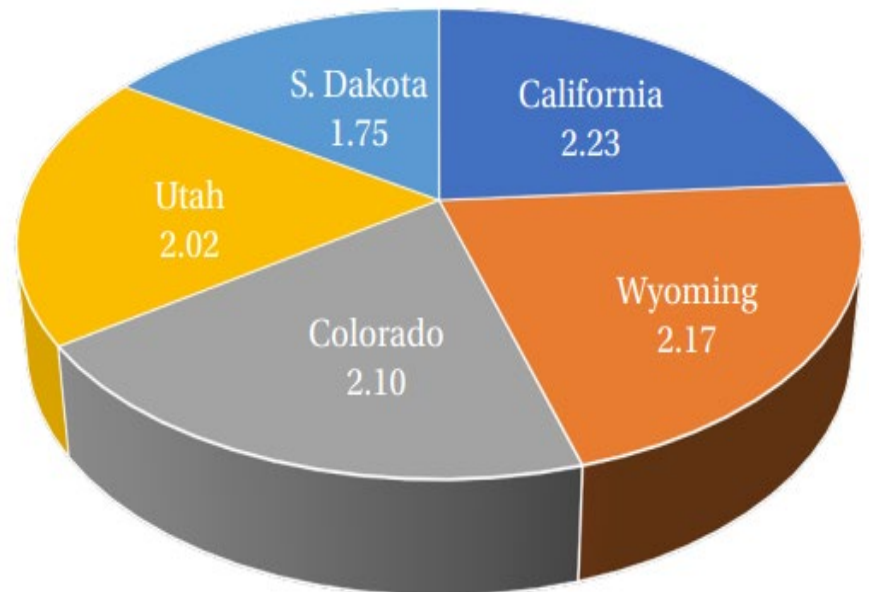
Wool Production

Top 5 Wool-Producing Countries (clean wt)

- 1 Australia
- 2 China
- 3 Russia
- 4 New Zealand
- 5 Turkey

Source: International Wool Textile Organization, 2024

Top Wool-Producing States in 2022¹ (Million pounds*)



Source: USDA, NASS, Sheep & Goats, Jan. 31, 2023.

You Need a Hair Cut?

- Cutting or shaving the wool off of a sheep is called **shearing**.
- Shearing doesn't hurt a sheep. It's just like getting a haircut.
- However, shearing requires skill so that sheep are shorn efficiently and quickly without cuts or injury to the sheep or shearer.
- Most sheep are sheared with electric shears or shearing machines.
- While some farmers shear their own sheep, many hire professional sheep shearers.



You Need a Hair Cut?

- Sheep are usually sheared once per year, usually in the spring before the onset of warm weather.
- Sheep with long fleeces are sometimes sheared twice a year. Some lambs are sheared to make them more comfortable during the summer.
- Many ewes are sheared before they lamb, because it results in a cleaner environment for baby lambs. Shearing before lambing keeps the fleeces cleaner.



Wonderful World of Wool



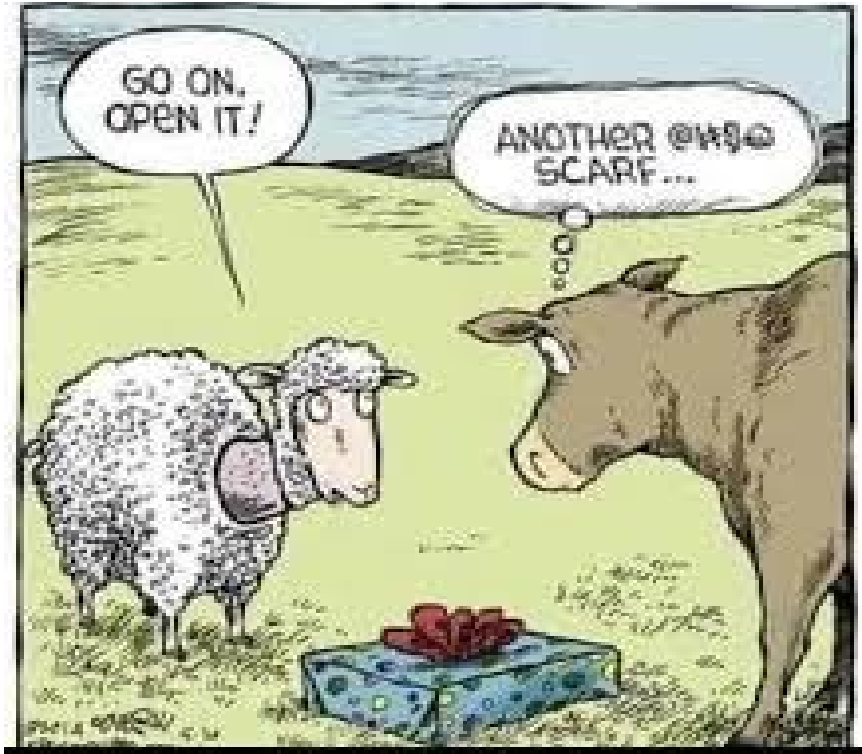
DURABILITY

- The flexibility of wool makes it very durable.
- Its elasticity makes it very resistant to tearing. Wool also has an outer film making it resistant to abrasion.

Dyeability

- Wool absorbs many dyes deeply, uniformly, and directly without the use of chemicals. This characteristic allows wool to achieve very beautiful and rich colors when

Wonderful World of Wool



Resilience

- Wool fiber can be stretched up to 50% of its length when dry without breaking. It will return to its original length when released.

Water Absorbency

- Wool can absorb up to 30% of its weight in moisture without feeling damp or clammy.
- This makes wool good for all climates since it aids in the body's cooling mechanisms to keep moisture away from the skin.

Wonderful World of Wool

Resistance to Fire

- Wool contains moisture in every fiber allowing it to resist flame without any additional chemical treatment. The wool will just char and self extinguish.
- Wool is self-extinguishing. It will not support combustion; this is why wool blankets are recommended for use in extinguishing small fires

Fire Blanket



Other Virtues of wool

- ❑ Wool does not shed.
- ❑ Wool resists snags, tears, wrinkles, soiling, and pilling.
- ❑ Wool drapes beautifully; never sags and retains shape.
- ❑ Wool is static-free.
- ❑ Wool is a natural moisturizer due to the high content of lanolin in the wool.



What other kinds of products do we get from sheep?

Lanolin

- Raw wool contains 10 to 25 percent grease or "lanolin," which is recovered during the scouring process. Lanolin is used in adhesive tape, printing inks, motor oils, and auto lubrication.
- It can also be refined for use in cosmetics and pharmaceuticals.
- Virtually all cosmetics and beauty aids, such as lipsticks, mascara, lotions, shampoos, and hair conditioners, contain lanolin



What other kinds of products do we get from sheep?

Hides and Skins

Sheep skins are removed from the carcasses after slaughter.

They are treated in a process called tanning and made into soft leather.

A small number of skins are preserved and sold as sheepskins.

Sheep skin is commonly used for making the chamois cloths that you wash your car with



What other kinds of products do we get from sheep?

Cheese and Dairy

Sheep cheese comprises about 1-2 % of the world's cheese. Some of the world's most famous cheeses were originally made from sheep's milk: Roquefort, Feta, Ricotta, and Pecorina Romano.

Sheep's milk is also made into yogurt, butter, and ice cream. It is estimated that the United States imported \$80 million worth of sheep milk products in 2025
(essfeed.com)



Global Milk Production by Species (2023)

Species	Estimated Production (million tonnes)	Share of Global Production
Cattle	753	81%
Buffalo	143	15%
Goat	19.1	2%
Sheep	10.9	1%
Camel	4.1	0.4%

Source: FAO Statistical Database (2024). Global milk production by species. Retrieved from <https://www.scienceagri.com/2023/07/the-5-worlds-most-popular-milk.html>

Sheep Biosecurity Essentials

- **Purpose of Biosecurity:**
 - Prevent disease introduction and spread.
 - Protect flock health and farm productivity.
 - Control movement of animals, people, and vehicles.
- **Core Practices:**
 - Isolate and Quarantine (new or sick animals).
 - Clean and disinfect equipment, boots, and pens.
 - Traffic Regulation
- **Record Keeping:**
 - Maintain accurate animal health and movement records.



Biosecurity Risks & Prevention

- **Common Disease Risks:**
 - Foot rot, caseous lymphadenitis, orf, internal parasites.
- **Visitors & Vehicles:**
 - Require clean clothing and boots(disposable plastic booties for visitors)
 - Limit unnecessary access.
- **Feed & Water:**
 - Store properly to avoid contamination.
 - Prevent access by wildlife.

Creating a Biosecurity Plan

- **Step-by-Step Approach:**
 - Assess current practices and risks.
 - Set clear protocols for animal entry, housing, and health monitoring.
 - Train staff and communicate plan with all visitors.
- **Emergency Preparedness:**
 - Have response plans for disease outbreaks.
 - Know when and how to contact veterinarians or authorities

PROTECTING THE SHEEP FLOCK

FARM ACTIVITIES

Preventing disease exposure depends on awareness and following biosecurity steps daily.



ANIMAL INTRODUCTIONS AND HEALTH



Incoming sheep can introduce disease unless quarantined and managed separately for a period of time. Observe, test, and vaccinate as recommended by your veterinarian.



Keep records of animal identification numbers, vaccinations, and treatments given. Records of animal, vehicle, and people movement on/off of the operation will be needed in a disease outbreak.



Wear gloves, wash all equipment, then change clothing, footwear and wash hands after working with sick sheep.

PERSONNEL AND EQUIPMENT



Wear farm-dedicated clothing that has not been around animals on other operations. Wear footwear that can be cleaned when moving between different animal groups.



Vehicles and animals used to move sheep can carry diseases on tires, paws, hooves, or equipment. Limit spread by working sheep from youngest to oldest and sick last.



Items that contact blood, tissues, sick animals, or are used in the mouth should be cleaned and disinfected between animals of different health status.

Predator Control



How big of a problem are predators?

- In 1994, American sheep producers lost an estimated 520,600 sheep and lambs to predators. That's 1,426 animals per day.
- In 2019 it was estimated that 226,910 sheep and lambs were killed by **predators** in the United States (USDA, 2020).
- Predation accounted for 37.0 percent of sheep and lamb death losses for the year. Coyotes were responsible for 47 percent of the total losses in 2020.

How big of a problem are predators?

- Predators not only cause severe economic loss by killing stock, they also loose producers money by weight loss and destruction of facilities such as barns and fences.
- It is also one of the leading reasons producers leave the business.
- Contrary to popular belief, predators do not only attack and kill only the weak, sick, and old.

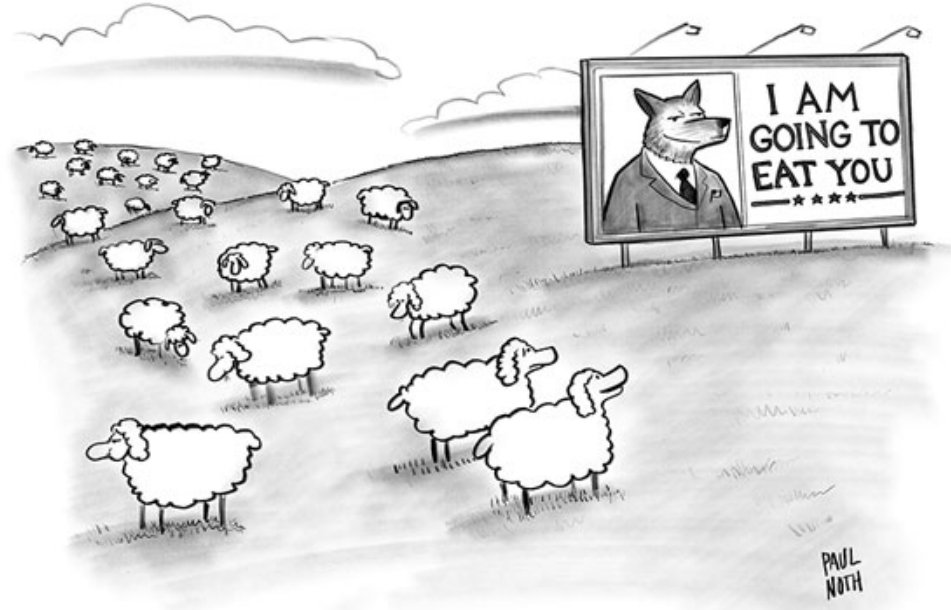
Predator-Related Losses of Sheep and Lambs in the U.S. (2020)

Predator	Adult Sheep Losses (%)	Lamb Losses (%)
Coyotes	58.8%	46.9%
Domestic Dogs	15.0%	33.9%
Mountain Lions	4.3%	5.9%
Bears	4.0%	1.4%
Wolves	2.1%	0.6%
Foxes	1.3%	5.2%
Eagles	0.0%	3.8%
Other/Unknown	14.5%	2.3%

Source: USDA APHIS Sheep Death Loss 2020 Report

Canines.

- Canines are by far the largest problem, accounting for 80% of all stock loss due to predation.
- Canines are: coyotes, wolves, foxes, and domesticated dogs.



"He tells it like it is."

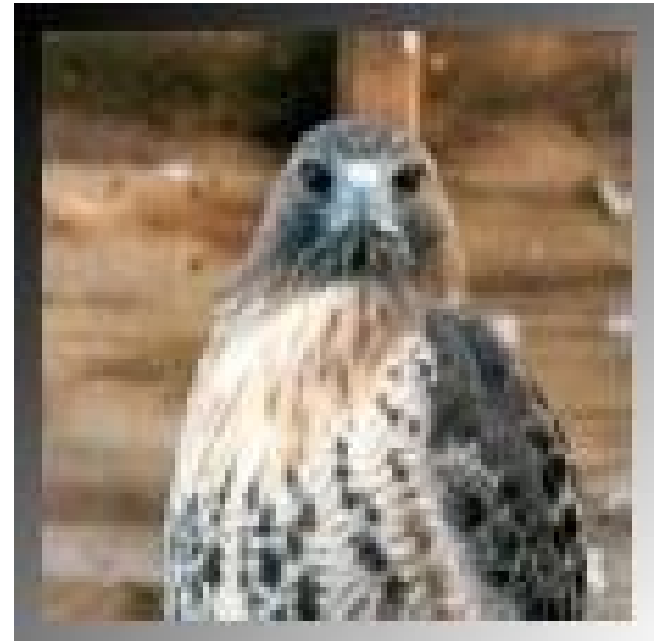
Felines.

- Felines are another predominate predator. Although not a problem here in the Northern US, in the west they are an increasing threat to sheep producers.
- Felines are: bobcats, mountain lions, and house cats.
 - House cats will attack newborn lambs.



Raptors.

- Raptors are birds of prey. These winged menaces will swoop in out of the sky and steal young lambs. However, most in this class are endangered, so control options are limited.
- Raptors are: hawks, eagles, vultures, osprey, and falcons.



Other Predators.

- In different Areas, there are some predators that while they may not be a risk elsewhere, they can cause significant harm.
- These include: bears, raccoons, opossums, rats, and humans.



Control Methods.

- **Ariel shooting-** Many thousands of coyotes are killed every year by gunmen in helicopters.
- **Guard Animals-** If trained properly and socialized properly this can be a very effective method of prevention.

Llama's

- A good guard llama is very cautious and curious of these predators and will usually charge them, and if the predator does not retreat, kick and stomp them.
- One llama is capable of guarding up to 2,000 sheep in up to 300 acres, and can decrease the amount of predation in a flock up to 100%.
- Llamas work best singly among their flock of sheep.



Donkey's

- Many ranchers and producers in Canada, as well as the U.S. and Australia, have used these animals as a guardian from dogs, coyotes and wolves.
- Donkeys serve as good guardians from these predators as they severely dislike dog-like creatures.
- Donkeys should work alone in a pasture of less than 100 ewes.



Guard Dogs

- The Great Pyrenees is one of the most popular breeds of guard dogs in the US. Originally known as the "Dog of the Mountains." They took their name from a mountain range in southwestern Europe.



Other Control Methods.

- **Wolf Urine-** Wolves are the natural enemies of coyotes and both species use their urine to mark their territories.
- **Fencing** has its ups and its downs. If done properly it can be a good deterrent for coyotes. However, building fences is expensive and costly.



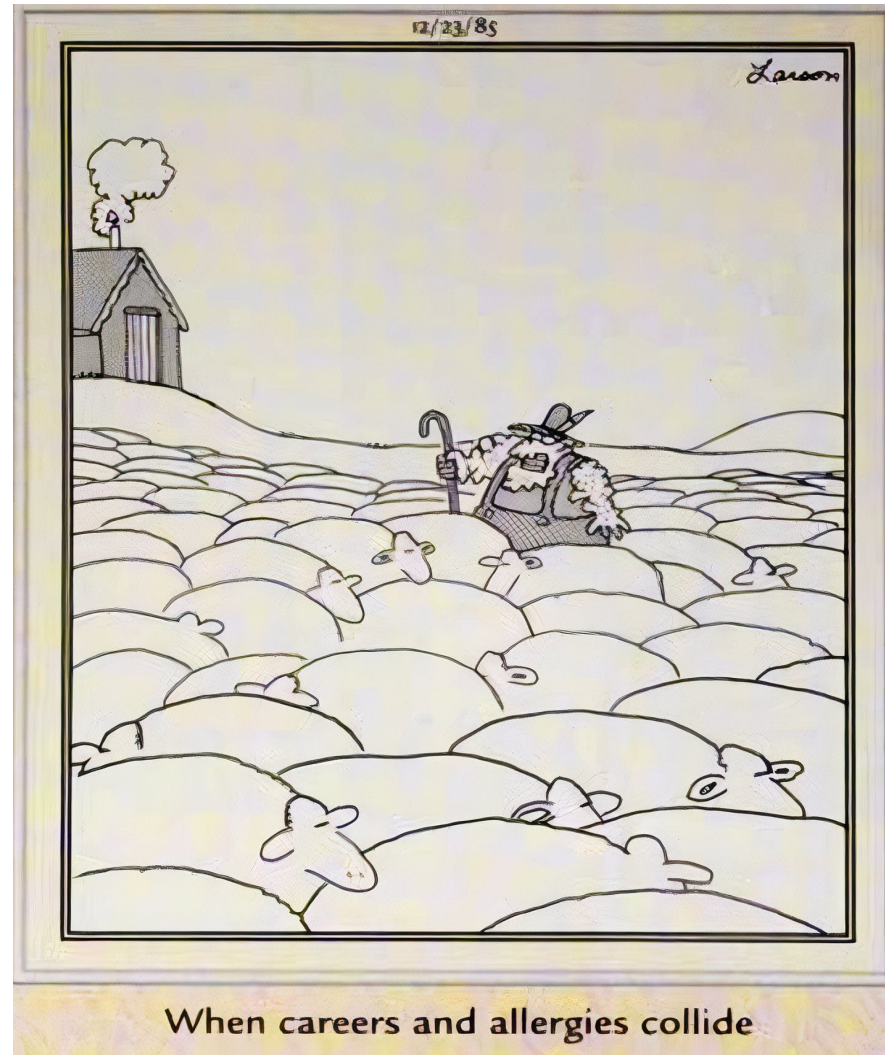
Other Control Methods.

- **Trapping-** most states have year-round trapping guidelines to control predator populations. However, most predators have highly developed senses, so traps may not always work.
- **Noise devises-** Noise and light scare tactics are effective to a point, but are best used in conjunction with other defenses because coyotes can become used to the devises.

Herding Dogs

A Shepherd's "Best Friend"

- A well-trained herding dog works in partnership with its handler and obeys commands to perform its job. Properly trained, the dog is able to move the sheep just about anywhere.
- Good herding dogs control sheep with calm authority and without excessive "commotion."



Herding dogs are used to manage sheep. They are also called stockdogs or working dogs.





UNIVERSITY OF MINNESOTA

THANK YOU!
QUESTIONS?
rozeboom@umn.edu