



Webinar Portal
for forestry and Natural Resources

Online Mapping Tools for the Natural Resource Professional
Part 3: Google Earth (GE) Part 1 (Basics)

12:00 PM (Eastern Time)

Made possible through
Forestry and Natural Resource Webinars

A partnership with

Robert Bardon


 North Carolina State University
 COOPERATIVE EXTENSION
 Engineering Paper - Forestry Solutions

Bill Hubbard

 Extension Forestry
 Southern Regional

Eric Taylor

 AgriLIFE EXTENSION
 Texas A&M System



Orientation

1. Audio Setup Wizard – Allows you to ensure your audio is set up properly.
2. Polling - Allows you to answer yes/no questions and respond in a multiple choice format
3. Chat - If the chat says “Supervised,” be aware that the presenter/moderator can see all messages, even those marked private.

Why did you join today's webinar?

- A. Need continuing education credits
- B. Subject matter
- C. Subject matter and CEUs
- D. Requested by boss
- E. Other

forestry & natural resource
webinar series



Webinar Portal
for Forestry and Natural Resources



- A. Extension or Education Agency
- B. Government Agency
- C. Private Natural Resource Business
- D. Landowner
- E. Other

forestry & natural resource
webinar series



Where are you webbing from?

- A. **Pacific**
- B. **Mountain**
- C. **Central**
- D. **Eastern**
- E. **Other**



Mapping the Land:

*applications, tips, and tricks for landowners
that make mapping easy*

Topic 3: Leveraging the Power of Google Earth: Part 1

January 15, 2014

James Jeuck

-Extension Associate, NCSU Extension Forestry

-Vice President, Administration, NC Tree Farm Program

jajeuck@ncsu.edu



Examples today will be drawn from.....



What we will cover today



- **Google Earth (GE)**
 - Overview of GE
 - Basic maneuvers in GE
 - Mapping your land in GE
 - ✦ Creating Google Earth layers for your land
 - ✦ Editing layers
 - Colors
 - Text
 - Area calculations
 - ✦ Saving your project
 - ✦ Including your data in a land management plan

Part 2: Google Earth: Overview



Google Earth (GE)



- Free Software (Pro Version \$400 / yr)
- Download just takes a few minutes from:
<http://www.google.com/earth/index.html>
- Requires you download it and run from your computer BUT.....
- It connects to their database online **so you MUST have an internet connection** in order to run it
- The free version of GE **DOES NOT** calculate acreage but University of New Hampshire's Cooperative Extension has created KML tools that will calculate acreage from GE files
- GE **DOES NOT** store any of your data online. This provides you with privacy but also requires you to save your data on your computer...it does not save it automatically like MLP does.

Meet the KML (KMZ) – Google’s data format



- What does .kml and .kmz mean?
 - Keyhole Markup Language & zipped format
- What is kml?
 - Its hypertext markup language (HTML) but has spatial (mapping) capabilities!

```

<?xml version="1.0" encoding="UTF-8"?>
<kml xmlns="http://www.opengis.net/kml/2.2" xmlns:gx="http://www.google.com/kml/ext/gx/v1" xmlns:atom="http://www.w3.org/2005/Atom" xmlns:link="http://www.w3.org/2005/Atom" document id="all_parcel_combined" xsi:schemaLocation="http://www.opengis.net/kml/2.2 http://www.opengis.net/kml/2.2, http://www.google.com/kml/ext/gx/v1 http://www.google.com/kml/ext/gx/v1">
  <name>all_parcel_combined</name>
  <Snippet maxLines="0"/>
  <Style id="Polystyle01">
    <LabelStyle>
      <color>00000000</color>
      <scale>0</scale>
    </LabelStyle>
    <LineStyle>
      <color>ff00ffff</color>
      <dash>3</dash>
      <width>
        <value>4</value>
      </width>
    </LineStyle>
  </Style>
  <PolyStyle>
    <color>00ffffff</color>
  </PolyStyle>
  <Placemark>
    <name>Parcel 1</name>
    <id>1</id>
    <description>Parcel 1</description>
    <MultiGeometry>
      <MultiLineString>
        <coordinates>
          <coordinates>
            <value>100 100 100 200 200 200 200 100 100 100</value>
          </coordinates>
        </MultiLineString>
      </MultiGeometry>
    </Placemark>
  </kml>
            
```

all_parcel.kmz	10/16/2013 1:21 PM	KMZ File	4 KB
mus.kmz	10/4/2013 12:00 PM	KMZ File	5 KB
parcel.kmz	10/4/2013 11:08 AM	KMZ File	6 KB
soils.kmz	10/4/2013 11:08 AM	KMZ File	15 KB

Basic maneuvers



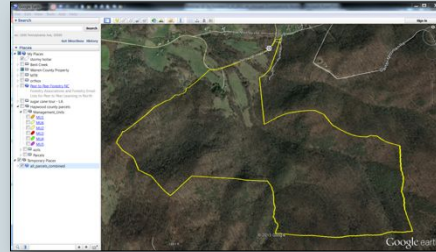
- Navigating through GE
- Tools / Setting terrain
- Historical Imagery
- Search Tools
- Layers
- Places



Mapping Your Land on GE



- Creating Project Folders in My Place
- Create / Edit Parcel Data
- Create / Edit MU Data
- Create / Edit Water and Roads
- Create / Edit Points of Interest



Alternative way to get information



- KML directly from your county mapping office
 - Provide the parcel PIN to your county GIS department if can create kml files of the boundary and the soils inside the boundary for you. Chances are they CAN but if they WILL is another story
 - You refer them to pp 9-11 of the Google Earth Basics document provided for instructions how to do this
 - You could also visit Transylvania County GIS at: <http://arcgis.webgis.net/nc/Transylvania/>
 - × Other NC Counties: Alleghany, Avery, Burke, Caswell, Cleveland, Montgomery, Rockingham, Rutherford, and Surry
 - × Other VA Counties: Franklin, Giles, Grayson, Halifax, Madison, Rockbridge, Smyth, and Wise
- Images downloaded from your county mapping office
 - A little more advanced but it allows you to load an fit an image of your property onto GE
 - You then use that as a guide to digitized your property onto GE
 - WILL DO NEXT SESSION

Many ways to share



- **Hard copy**
 - print directly from GE
- **Imbed in management plan:**
 - Screen print and paste
 - Use Windows Snipping Tool
 - Post Management Plan in MLP
- **Share with client who has GE**
 - Email from GE
- **Share with client or others who do not have GE**
 - Post it to Google Maps
 - Email link to the Google Maps posting





Coming up in the series...


- **Part 4: Leveraging the power of Google Earth**
January 22 at 12 PM Eastern

Topics covered include

- Aerial Images and Image Overlays
- GPS import / export
- Embedding photos

James Jeuck, NCSU
919.515.5574
jajeuck@ncsu.edu

HOMEWORK.....Now go out and give it a try!!!
HAPPY MAPPING!!!



Webinar Portal
for Forestry and Natural Resources

Questions?

Remember: To qualify for and receive continuing education credits for participating in today's webinar, you must

1. Complete the satisfaction survey pushed out during the webinar
2. Take and pass the short quiz at the end of the webinar
3. Complete the Continuing Education Unit Request Form (CEU Form) and certify that you have participated or viewed the webinar in its entirety

Subscribe: Join our email subscription list if you would like us to keep you automatically informed of upcoming webinars (<http://forestrywebinars.net> and click on subscribe)