

# Welcome to the UGA Extension Webinar Series

The webinar will start at 10:30 am  
(we will do a sound check at 10:25 am)

<https://extension.uga.edu/emergencies>  
<https://intranet.caes.uga.edu/>



UNIVERSITY OF GEORGIA  
EXTENSION



georgia4h.org

**Extension Webinar Series**  
**Thursday, February 4,**  
**10:30 a.m.**

**Please submit questions in the**  
**Q & A for our presenter**

**Send suggestions for future**  
**topics or speakers to Maria**  
**Bowie -- [mbowie@uga.edu](mailto:mbowie@uga.edu)**



**UNIVERSITY OF GEORGIA**  
**EXTENSION**



[georgia4h.org](http://georgia4h.org)

*UGA Extension Presents:*

**How to Build Schools and Communities of Hope**  
**through Student Voice, Community Partnerships, and**  
**Wraparound Services**

Thursday, February 4th, 2021 | 10:30 AM  
Q & A to follow

**Access Free Webinar Here**



Lee Anna Deal,  
4-H PDC



Leigh Colburn,  
Educational Consultant



Mandy Marable,  
State 4-H Specialist



**UNIVERSITY OF GEORGIA**  
**EXTENSION**

© 2010 Exemplar Education Consultancy, LLC



An equal opportunity, affirmative action, veteran, disability institution

# What is Cooperative Extension?

Faculty and staff committed to improving the state and its communities through research-supported programs, expertise and service to grow businesses, families and the environment every day.



UNIVERSITY OF GEORGIA  
EXTENSION



[georgia4h.org](http://georgia4h.org)



The mission of UGA Cooperative Extension is to extend lifelong learning to the people of Georgia through unbiased, research-based education in agriculture, the environment, communities, youth and families.



UNIVERSITY OF GEORGIA  
EXTENSION



[georgia4h.org](http://georgia4h.org)

We translate the **science**  
**of everyday living**  
for families, farmers  
and communities to  
foster a **healthy and**  
**prosperous Georgia.**



UNIVERSITY OF GEORGIA  
**EXTENSION**




Local.  
Personal.  
Science-based.  
Results-driven.  
Collaborative.  
Multigenerational.  
**UGA Extension.**

## Working in local communities for a better Georgia from the ground up



### Agriculture & Natural Resources

 138 agents

  
482,376  
face-to-face  
contacts

  
42,798  
on-site  
consultations

  
103,318  
diagnostic tests  
by agricultural  
& environmental  
services labs

  
3,806  
programs

  
2,511  
Master Gardener  
Extension  
Volunteers

  
193,357  
face-to-face  
contacts


  
2,852  
programs

  
652  
ServSafe®  
certificates issued

  
9,746  
nutrition  
education program  
participants

  
2,167  
volunteers

### Family & Consumer Sciences

 53 agents

### 4-H Youth

 121 agents

  
1,134,199  
face-to-face  
contacts

  
238,997  
4-H'ers

  
33,107  
programs

  
109,652  
visitors to  
4-H centers

  
7,857  
teen and adult  
volunteers



UNIVERSITY OF GEORGIA  
**EXTENSION**

# Georgia 4-H and Wrap Around Student Services

**GEORGIA**

4-H

**190,617**\*

TOTAL PARTICIPATION



2019-2020 PROGRAM YEAR

\*LIMITED DUE TO COVID-19

PUBLIC AND PRIVATE SCHOOL 4-H ENROLLMENT: **114,550**

HOME SCHOOL 4-H ENROLLMENT: **2,111**

FORT VALLEY STATE UNIVERSITY 4-H ENROLLMENT: **10,866**

PARTICIPANTS IN 4-H ENRICHMENT PROGRAMS: **39,043**

4-H ENVIRONMENTAL EDUCATION PARTICIPANTS: **23,678**

"STEP UP & LEAD" 4-H STUDENT LEADERSHIP  
CONFERENCE PARTICIPANTS: **369**



UNIVERSITY OF GEORGIA  
**EXTENSION**



[georgia4h.org](http://georgia4h.org)

# Georgia 4-H and Wrap Around Student Services

## DIVERSITY

WHITE: 56.0%  
BLACK/AFRICAN AMERICAN: 29.4%  
ASIAN: 2.2%  
AMERICAN INDIAN/  
ALASKA NATIVE: 1.1%  
NATIVE HAWAIIAN/  
OTHER PACIFIC ISLANDER: 0.3%  
MORE THAN ONE RACE: 3.8%  
UNDETERMINED: 11.0%

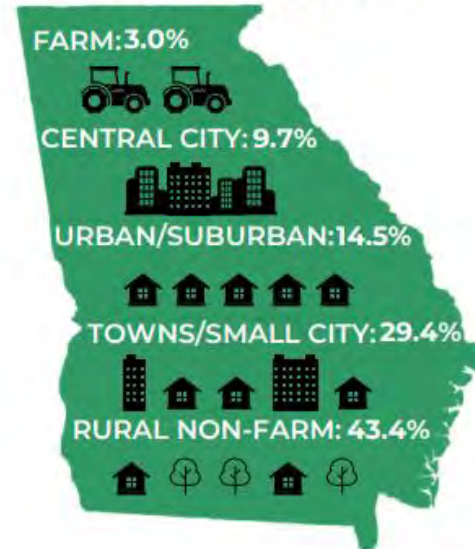


 52% FEMALE  48% MALE

## ETHNICITY

7.5% LATINO 92.5% NON-LATINO

## RESIDENCE



## GRADES

### ELEMENTARY

66% 

MIDDLE  
24% 

HIGH  
7% 

COLLEGE  
3% 



UNIVERSITY OF GEORGIA  
EXTENSION



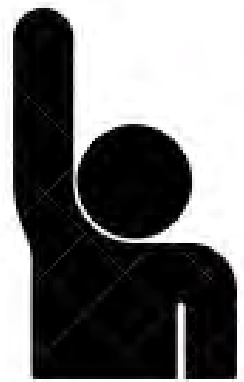
[georgia4h.org](http://georgia4h.org)

# Georgia 4-H and Wrap Around Student Services

62,152\*



## VOLUNTEERS



5,318 ADULTS CONTRIBUTED 93,385 HOURS

1,801 TEENS CONTRIBUTED 39,291 HOURS



23,678\* ENVIRONMENTAL EDUCATION PARTICIPANTS



\*usage and participation until March 2020



georgia4h.org

# Georgia 4-H and Wrap Around Student Services

## AGRICULTURE & STEM

Youth focus on agricultural sciences, natural resources, environmental sciences, plant and animal sciences, agribusiness, rocketry, robotics, renewable energy, computer science, technology, engineering, and more.

LIVESTOCK AND ANIMAL PROJECTS



AGRICULTURAL SCIENCES

ENGINEERING AND TECHNOLOGY



COMPUTER INFORMATION TECHNOLOGY

## CIVIC ENGAGEMENT

Youth learn to be well-informed and engaged citizens through experiences and activities focused on leadership, communication, performing arts, public speaking, organization, the importance of giving back to improve communities, and more.



LEADERSHIP

COMMUNITY SERVICE



WORKFORCE DEVELOPMENT

COMMUNICATION



## HEALTHY LIVING

Youth focus on nutrition, obesity prevention, drug awareness, bullying prevention, health and fitness, financial literacy, clothing and textiles, safety, stress management, social and emotional wellness, food science, and more.

FOODS AND NUTRITION



HEALTHY RELATIONSHIPS

HEALTH AND FITNESS



FINANCIAL WELL BEING



UNIVERSITY OF GEORGIA  
EXTENSION

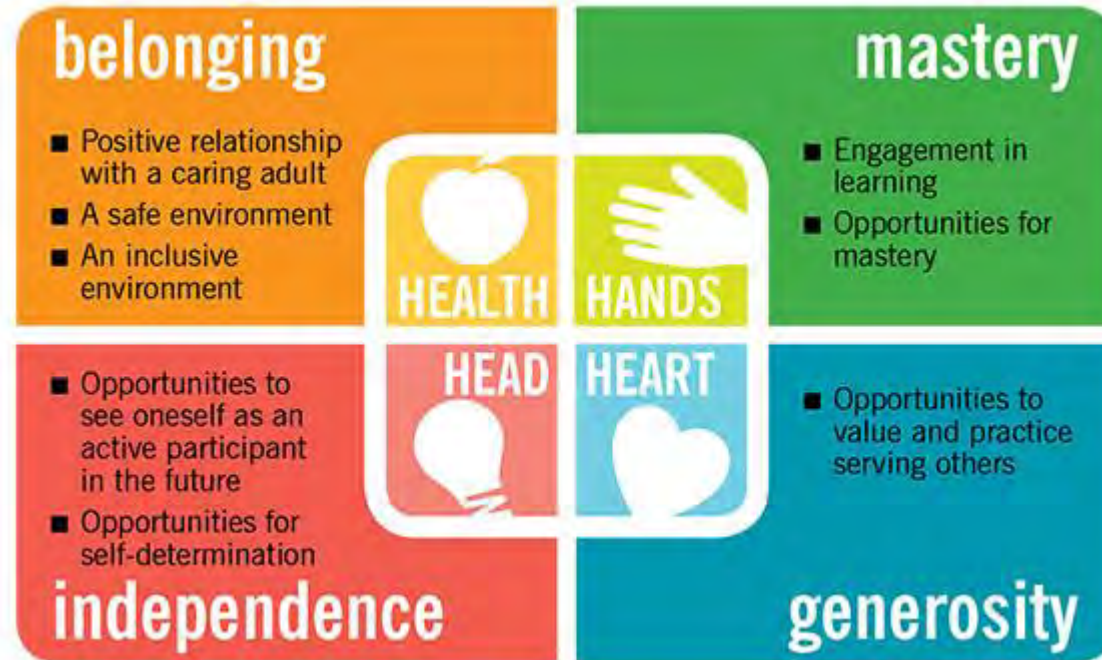


[georgia4h.org](http://georgia4h.org)

# National 4-H: Essential Elements

In School Programming (club meetings)

Summer Camp



Project Achievement

State Council



UNIVERSITY OF GEORGIA  
EXTENSION



georgia4h.org

Image Credit:

<https://www.ag.ndsu.edu/publications/kids-family/essential-elements-for-positive-youth-development>

# Georgia 4-H and Wrap Around Student Services

Connecting, Collaborating, and Coaching



UNIVERSITY OF GEORGIA  
EXTENSION



georgia4h.org

\*all photos are pre-Covid19 and mask requirements

# Georgia 4-H and Wrap Around Student Services



## School Relations Knowing Your System(s)

THE GOVERNOR'S OFFICE OF  
**STUDENT ACHIEVEMENT**  
Georgia School Grades Reports

Schools Districts Databases About GGSA FAQ References Contact Us

Do you know your local school system's graduation rate?  
<https://schoolgrades.georgia.gov/>

Georgia Graduation Rates – 2012 to 2018

2018	– 81.6 percent
2017	– 80.6 percent
2016	– 79.4 percent
2015	– 79.0 percent
2014	– 72.6 percent
2013	– 71.8 percent
2012	– 69.7 percent

UNIVERSITY OF GEORGIA EXTENSION

<https://www.gadoa.org/External-Affairs-and-Policy/communications/Pages/PressReleaseDetails.aspx?PressViewedDefault&pid=644>

# SCHOOL RELATIONS TRAINING MANUAL

A University of Georgia Extension Resource for County Extension Faculty and Staff

UNIVERSITY OF GEORGIA EXTENSION

# Questions & Answers

**Please type your questions in the  
Q and A box.**



**UNIVERSITY OF GEORGIA**  
**EXTENSION**



[georgia4h.org](http://georgia4h.org)