

Woodland Owner Lunch and Learn Forest Road, Boundary Line Maintenance and Beaver Management

July 9, 2020

Mark Megalos, PhD, Extension Professor
Colby Lambert, CF, Area Specialized Agent – Forestry
Todd Menke, Assistant State Director – USDA-APHIS- Wildlife Services



Agenda

- Key forest road maintenance techniques
- Look at different forest road situations
- Discuss how to improve forest roads
- Boundary line maintenance
- Questions



Forest Road Maintenance

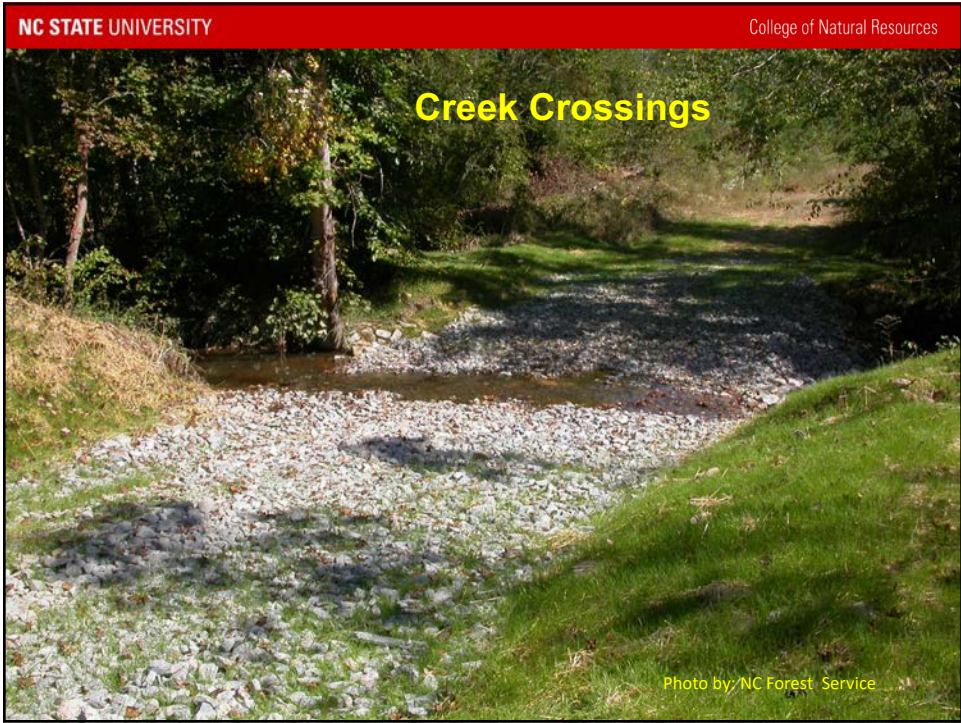
- One the most expensive improvements to your forests.
- Important for many reasons:
 - Thinning
 - Harvesting
 - Recreation
 - Inspection
- Once you spend the money to construct it, maintenance is key to keep it in passable shape.



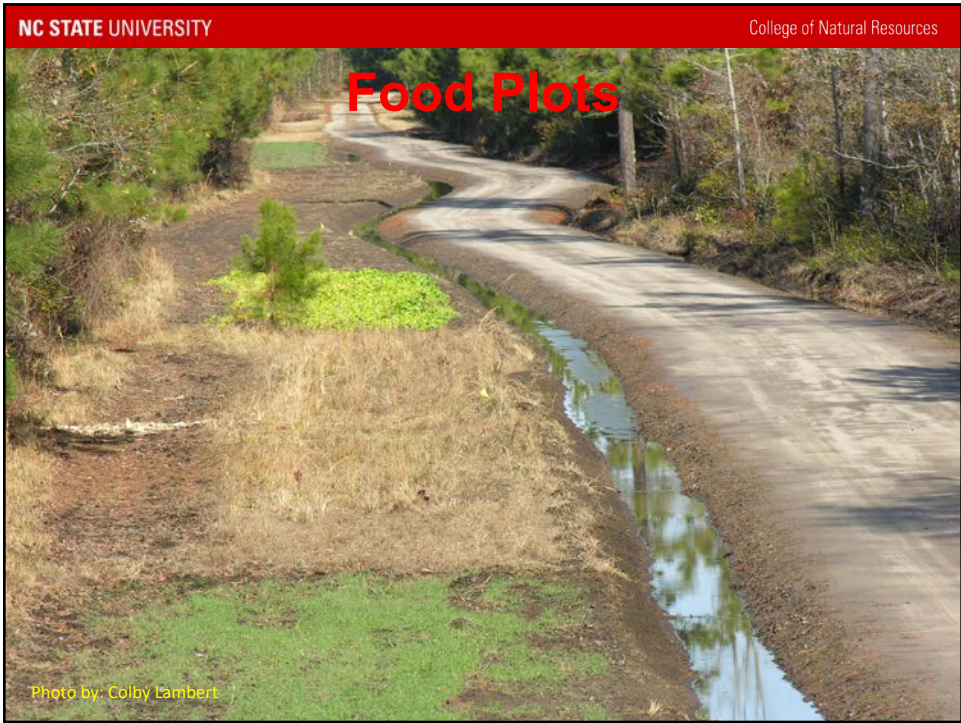
Key Maintenance Considerations

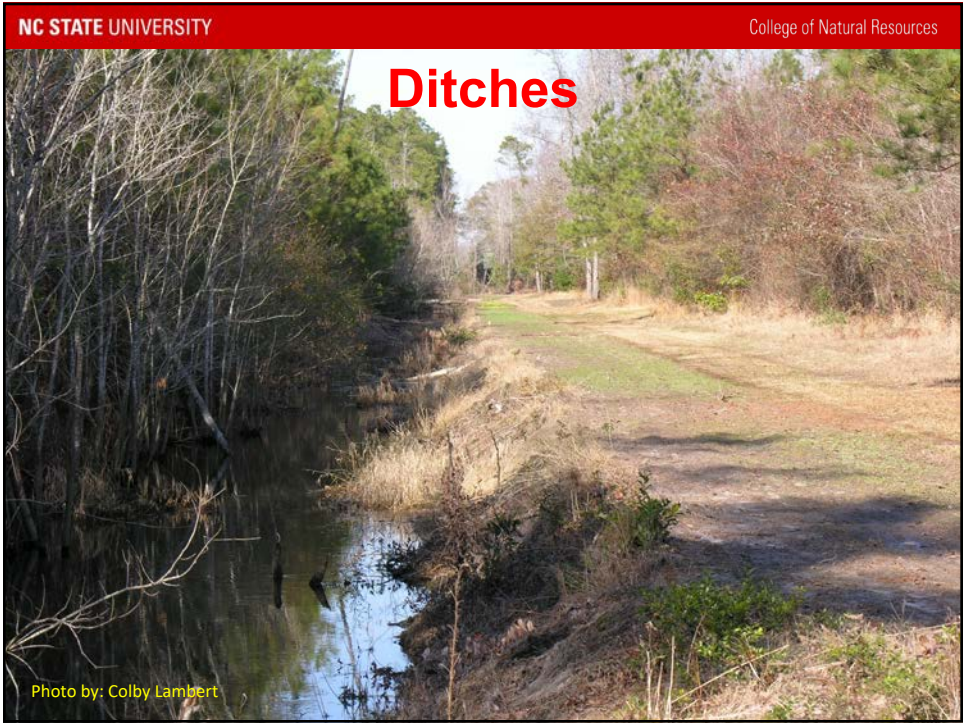
- Water bars
- Broad based Dips
- Creek crossings
- Daylighting
- Crowning
- Ditches
- Culverts













NC STATE UNIVERSITY College of Natural Resources

Summary

- Following good BMP guidelines for road construction and maintenance is key for longterm usability of the road.
- Spend some time cleaning “upstream” from your creek crossings and culverts to ensure they don’t blow out.
- Maintain and “freshen” up waterbars and broad based dips regularly.
- Clean out ditches and keep your roads crowned to allow proper drainage.

Boundary Line Maintenance



WHERE TO BEGIN

- IF LINES AND CORNERS ARE EVIDENT, CHECK FOR CONDITION, MAINTAIN AS NEEDED
- IF LINES AND CORNERS ARE NOT EVIDENT, THEN THE SEARCH BEGINS:
 - DEED DESCRIPTION—FOUND BY SEARCH AT COURTHOUSE/INTERNET SEARCH OF COUNTY GIS SYSTEM
 - AERIAL PHOTOS—PREFERABLY WITH APPROXIMATE BOUNDARIES MARKED (GIS WEBSITE) OR BY INSERTING SHAPE FILE OVER PHOTO

A COMPASS – Line Locator



USING A COMPASS

- PROPER DECLINATION
- BEARINGS AND DISTANCES IN MOST DEEDS OR ON SURVEY PLATS
- NEED TO FIND A “ KNOWN” STARTING POINT ON THE GROUND

THE GROUND SEARCH BEGINS

- EVIDENCE OF LINES/CORNERS
 - OLD CORNERS-PIPES/AXLES/TREES/CONCRETE, ETC AS NOTED IN DEED OR SURVEY PLAT
 - “WITNESS” IS OFTEN FOUND BY OLD PAINT OR “BLAZES” ON TREES
 - SINGLE BLAZE /PAINT WITNESSES LINE **LOCATION**
 - DOUBLE BLAZE / PAINT INDICATES CHANGE IN LINE **DIRECTION**
 - TRIPLE BLAZE / PAINT WITNESSES **CORNERS**

HACKS OR BLAZES ON LINE RE-CHOP EVERY VISIT



NC STATE UNIVERSITY College of Natural Resources

BLAZES ON CORNERS



A photograph showing a close-up of a tree trunk. A horizontal pink band is painted around the trunk. Below the band, a V-shaped notch is cut into the bark. Two hands are visible, one pointing to the top of the notch and the other pointing to the bottom of the notch.

NC STATE UNIVERSITY College of Natural Resources

OLD PAINT



A photograph of a tree trunk in a forest. A horizontal yellow band is painted around the trunk. The paint is significantly weathered, with large areas of peeling and missing paint, revealing the underlying bark. The background shows a forest with many trees and fallen leaves on the ground.

WHEN YOU FIND IT, FLAG IT- PAINT IT LATER

- CORNERS WITH THREE FLAGS
- LINES WITH ONE FLAG
- CHANGES IN LINE DIRECTION WITH TWO FLAGS

Tip:

ALWAYS POINT THE KNOTS TOWARD THE LINE,
CORNER OR DIRECTION CHANGE

CORNERS WITH THREE FLAGS OR PAINT STRIPES FACING CORNER



LINES WITH ONE FLAG/STRIPE FACING THE LINE




CHANGES IN LINE DIRECTION WITH TWO FLAGS/STRIPES



NC STATE UNIVERSITY College of Natural Resources

A FINISHED, MAINTAINED LINE LOOKS LIKE THIS

- LINE TREES FACING LINE
- TREES ON LINE SINGLE STRIPE ON CENTER OF TREE ON LINE



The photograph shows a line of trees in a forest. The trees are marked with yellow paint and pink tape. The trees are facing the line, and there is a single stripe on the center of each tree on the line.

NC STATE UNIVERSITY College of Natural Resources

A FINISHED, MAINTAINED CORNER WITNESS LOOKS LIKE THIS

- CORNER WITNESS




The photograph shows a corner witness tree in a forest. The tree is marked with yellow paint and pink tape. The tree is facing the corner, and there is a single stripe on the center of the tree on the corner.

NC STATE UNIVERSITY College of Natural Resources

PAINTING TIP-ALWAYS PREPARE BEFORE PAINTING

- SCRAPE OFF LOOSE BARK WITH MACHETE OR DRAW KNIFE, THEN PAINT
- INCREASES PAINT LIFE BY 35-40%



NC STATE UNIVERSITY College of Natural Resources

Painting on Hardwood



Avoiding Timber Trespass/Theft

- Clearly post your property (conform to or exceed the legal requirements)
- Be diligent with boundary line maintenance
- Repaint as needed to ensure high visibility in all seasons
- Clearly identify property corners

Reference: content.ces.ncsu.edu/preventing-timber-trespass-and-theft

Avoiding Timber Trespass/Theft

MONITOR!!!!

- Visit the property frequently
- Join or establish a formal or informal neighborhood watch group
- Post signage that indicates the property is under surveillance by such a group or insurer
- Encourage ag and hunting lease holders to monitor and report any suspicious activity on the property

Reference: content.ces.ncsu.edu/preventing-timber-trespass-and-theft

USDA
United States Department of Agriculture

**Woodland Owner Lunch and Learn Webinar
North Carolina Beaver Management Assistance Program
July 9, 2020**



Wildlife Services Protecting People ♦ Protecting Agriculture ♦ Protecting Wildlife

USDA
United States Department of Agriculture



<https://www.youtube.com/watch?v=3Qrg6WInozc&feature=youtu.be>

Wildlife Services Protecting People ♦ Protecting Agriculture ♦ Protecting Wildlife

USDA
United States Department of Agriculture

Collaborative Cost Share Program

- ✓ Address specific problems
- ✓ Private and public lands
- ✓ Began July 1, 1992
- ✓ Flexible, fair, and feasible
- ✓ NCWRC, NCDOT, Counties, Landholders, USDA Funds
- ✓ Free training/assessments
- ✓ Advisory Board
 - NCWRC
 - NCDOT
 - NCDA&CS
 - NCFS
 - Soil and Water Cons.
 - NC Ass County Comm
 - NC Farm Bureau
 - NC Forestry Ass
 - USDA-WS

Wildlife Services Protecting People ♦ Protecting Agriculture ♦ Protecting Wildlife

USDA
United States Department of Agriculture

NC Beaver Management Assistance Program



<https://www.ncwildlife.org/Trapping/North-Carolina-Beaver-Management-Assistance-Program>

Wildlife Services Protecting People ♦ Protecting Agriculture ♦ Protecting Wildlife

USDA
United States Department of Agriculture

Obtaining Service



- ✓ Free assessment
- ✓ Average 10 visits
- ✓ 30 days to resolve
- ✓ First come first serve
- ✓ Page 2 contact info


Administration

- ✓ By Wildlife Services
- ✓ Approved by NCWRC
- ✓ Developed by Beaver Damage Control Advisory Board

Wildlife Services Protecting People ♦ Protecting Agriculture ♦ Protecting Wildlife

USDA
United States Department of Agriculture

Obtaining Service




<https://www.ncwildlife.org/Portals/0/Learning/documents/Profiles/Mammals/BMAP-Obtaining-Services.pdf>

Wildlife Services Protecting People ♦ Protecting Agriculture ♦ Protecting Wildlife

USDA
United States Department of Agriculture

Policies and Procedures



County

- ✓ \$6,000 participation fee
- ✓ Expect 10–14 projects
- ✓ 4-6 DOT
- ✓ 6-8 non-DOT
- ✓ State Fiscal Year

Landholder

- ✓ \$25 per visit
- ✓ \$125 per beaver dam

WRC

- ✓ 43 counties FY 20-21


USDA Wildlife Services

- ✓ Implement program
- ✓ 30 day guarantee

Wildlife Services Protecting People ♦ Protecting Agriculture ♦ Protecting Wildlife

USDA
United States Department of Agriculture

Policies and Procedures



<https://www.ncwildlife.org/Portals/0/Learning/documents/Profiles/Mammals/BMAP-Comprehensive-Polices-and-Procedures.pdf>

Wildlife Services Protecting People ♦ Protecting Agriculture ♦ Protecting Wildlife

USDA
United States Department of Agriculture

Program Effectiveness



- ✓ 26-year track record
- ✓ Statewide coverage
- ✓ Year-round
- ✓ Site-specific
- ✓ Highly trained staff
- ✓ High professional standards
- ✓ Sound stewardship of wildlife
- ✓ Environmentally and ecologically responsible

Wildlife Services Protecting People ♦ Protecting Agriculture ♦ Protecting Wildlife

USDA
United States Department of Agriculture

Program Effectiveness



<https://www.ncwildlife.org/Trapping/North-Carolina-Beaver-Management-Assistance-Program#101212068-program-effectiveness>

Wildlife Services Protecting People ♦ Protecting Agriculture ♦ Protecting Wildlife

USDA
United States Department of Agriculture

Bounty Programs

- ✓ **Costly**
- ✓ **Easily abused**
- ✓ **Beaver parts online**
- ✓ **Seldom, if ever, solves problems**
- ✓ **Provides no incentive to remove all beavers**
- ✓ **Often takes up to four weeks to solve issues**
- ✓ **Target 100% beavers indiscriminately**
- ✓ **No value placed on benefits beaver provide**

Wildlife Services Protecting People ♦ Protecting Agriculture ♦ Protecting Wildlife

USDA
United States Department of Agriculture


Bounty Programs

<https://www.ncwildlife.org/Learning/Species/Mammals/Beaver2#it-44731644-have-a-problem>

Wildlife Services Protecting People ♦ Protecting Agriculture ♦ Protecting Wildlife

USDA
United States Department of Agriculture

Other Options




- ✓ Licensed trappers:
<https://www.ncwildlife.org/Trapping/Contact-a-Licensed-Trapper>
- ✓ WDCA:
<https://www.ncwildlife.org/Trapping/Wildlife-Damage-Control-Agent>
- ✓ Do-it-yourself:
<https://www.ncwildlife.org/Portals/0/Trapping/Documents/TrapperEd Student manual 2005.pdf>

Wildlife Services Protecting People ♦ Protecting Agriculture ♦ Protecting Wildlife

USDA
United States Department of Agriculture

Questions



Wildlife Services Protecting People ♦ Protecting Agriculture ♦ Protecting Wildlife