

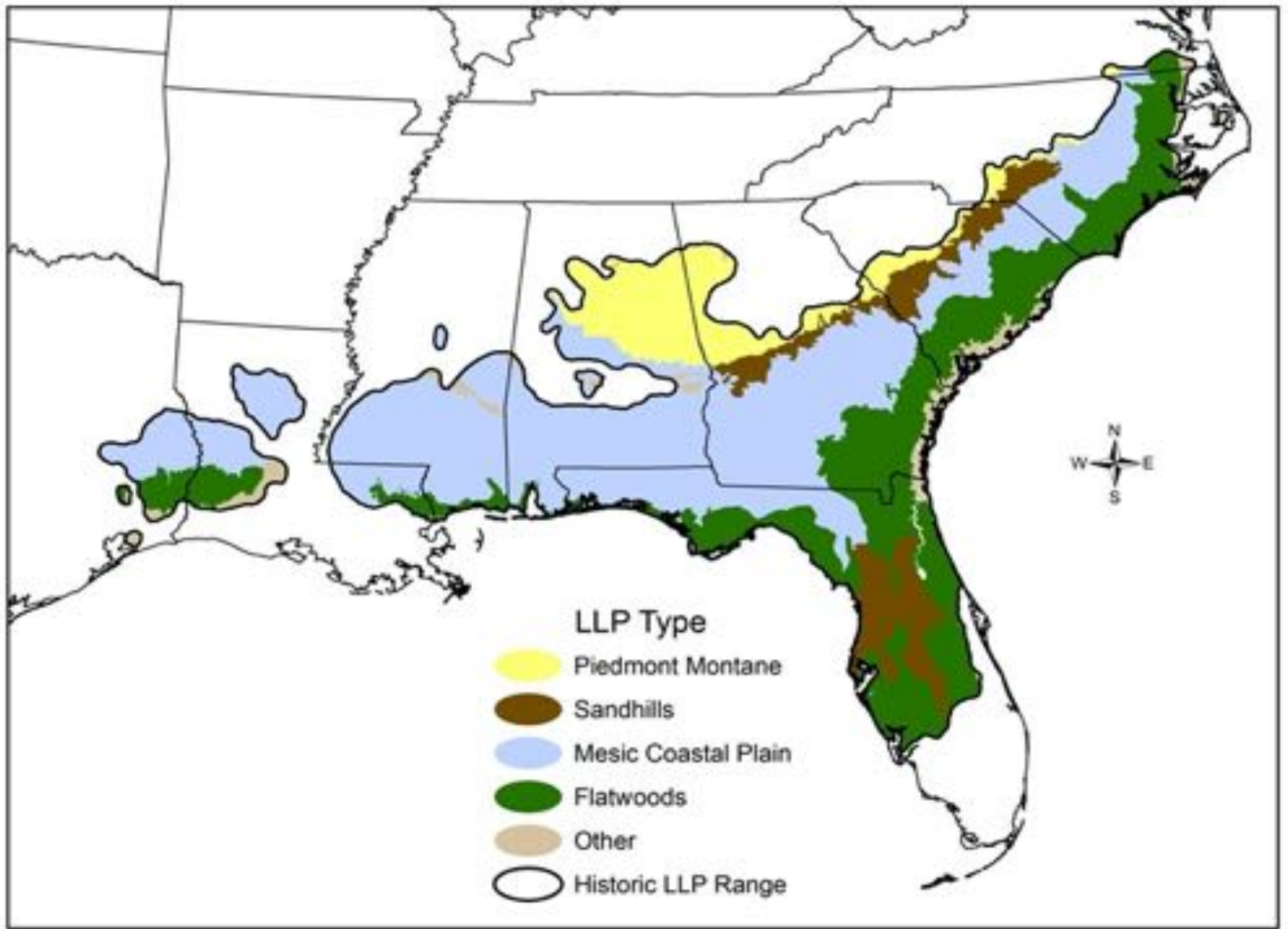


# **Native Plants of Longleaf Pine Forests – Their Wildlife Value and the Rare Ones**

**Julie Moore**















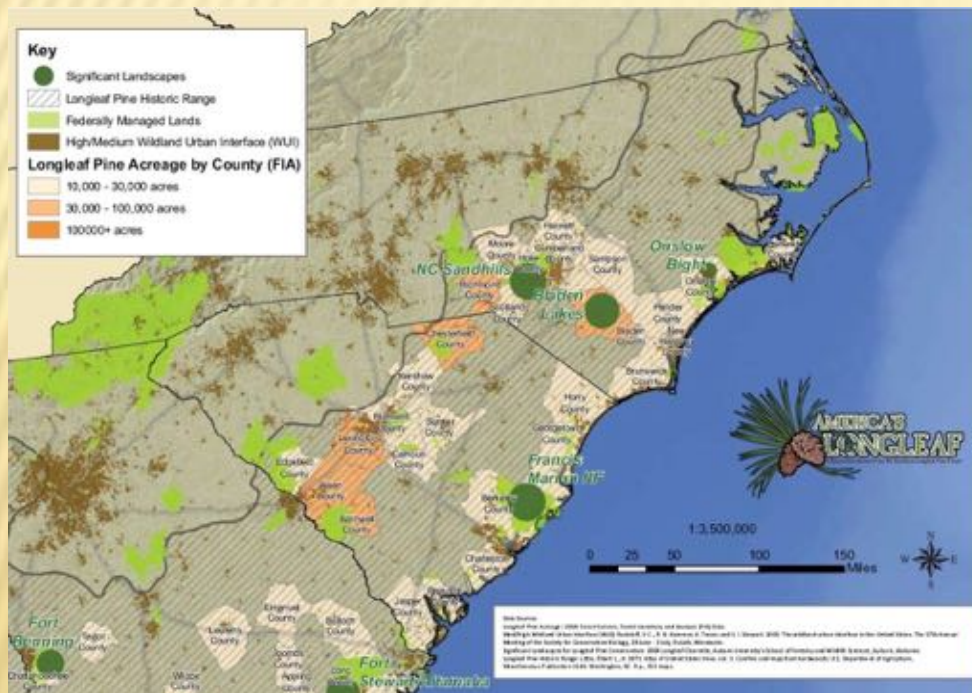
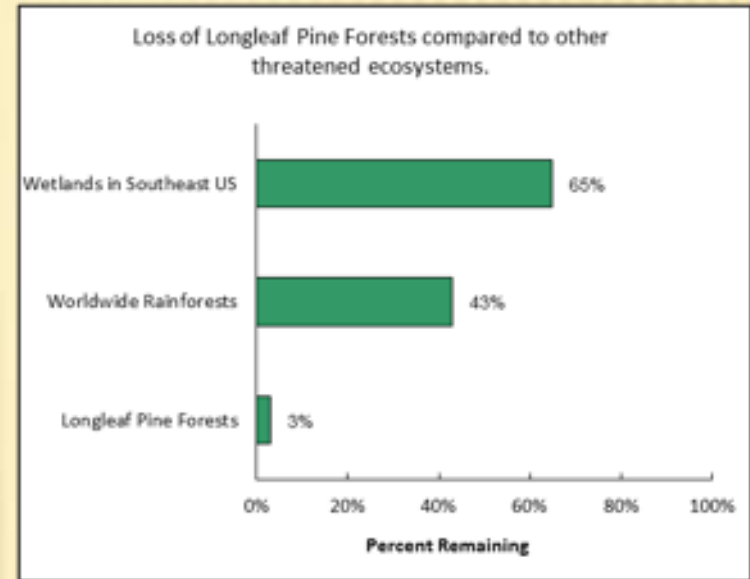
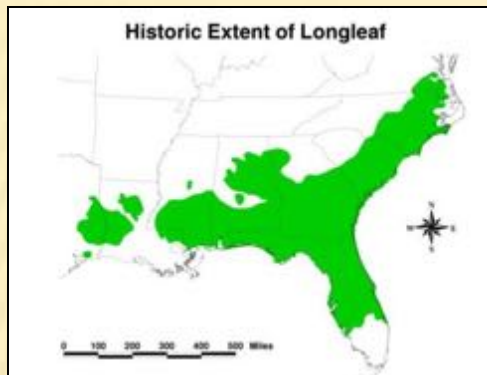










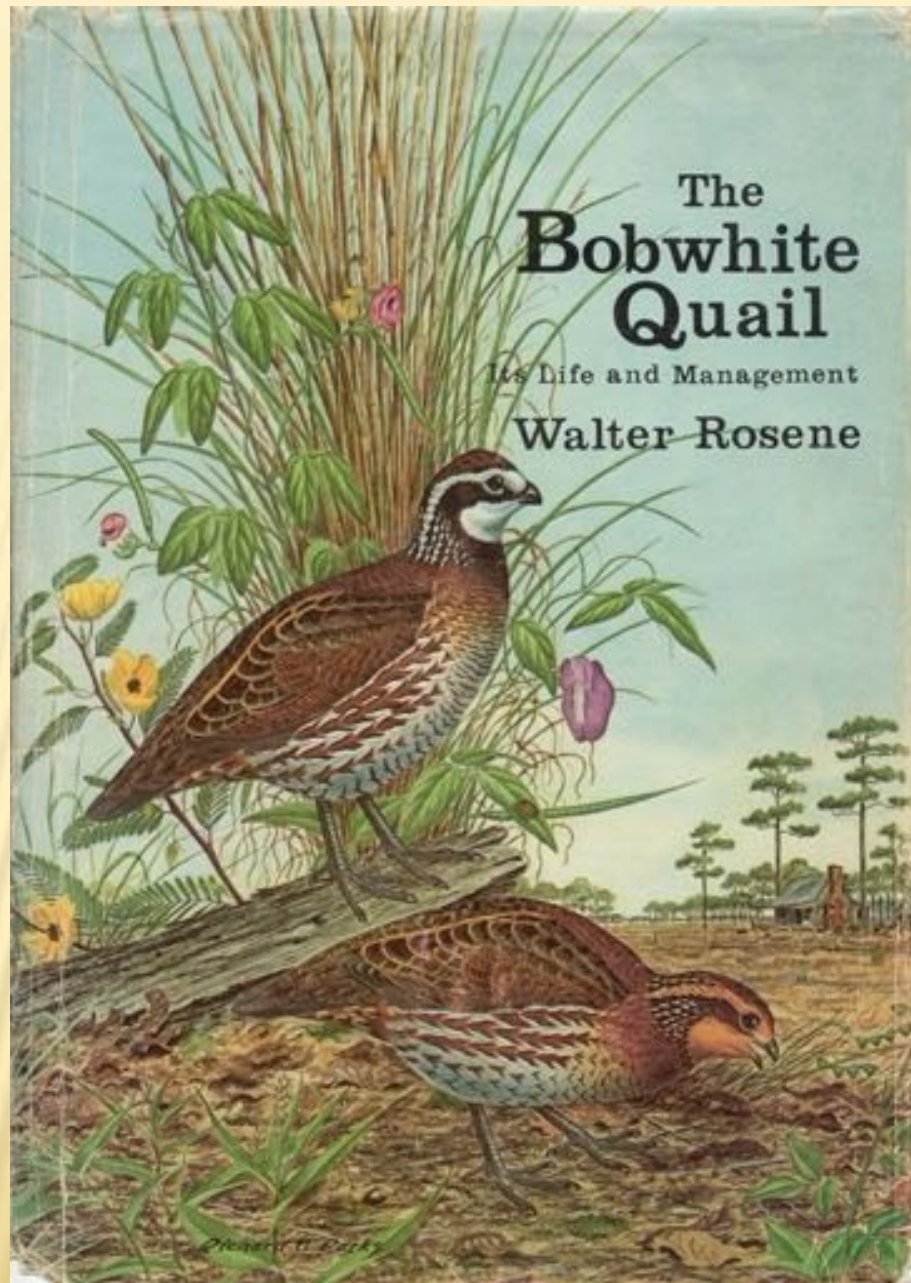


Most diverse North America temperate ecosystem  
 900 + endemic plants  
 60% of all SE US herps  
 30 Federally-listed T/E species

The  
**Bobwhite  
Quail**

Its Life and Management

Walter Rosene



























# VENUS FLYTRAP *DIONAEA MUSCIPULA*





**FIRELILY *LILIUM PYROPHYLLUM***



**Roughleaf loosestrife *Lysimachia asperulaefolia***







#### WOODY PLANTS

##### Songbirds (fruit)

- + Catbird, *SE*
- + Crossbill, White-winged, *NE*
- + Groundsuck, Pine, *NE*
- + Jay, Florida, *Fla.*
- + Oriole, Orchard, *SE*
- + Tanager, Scarlet, *NE*
- + Towhee, Red-eyed, *NE*

##### Far and Game Mammals (fruit)

- + Fox, Gray, *Pa.*
- Squirrel
- + Fox, *Ohio*
- Fox, Western, *Mo.*

##### Hoofed Browners (twigs, foliage)

- + Deer, White-tailed, *Maine*



#### BLUEBERRIES

*Vaccinium*



**107\*/83 used!** The blueberry genus, *Vaccinium*, is centered mainly in the Northern Hemisphere. Its aggregate species number 120 to 150, about 75 to 85 of which are native to the United States. As treated here the genus embraces not only the true blueberries but also the dewberries, cranberries, farkleberry, and lullberry, each of which is classed by some botanists in a separate genus. For present purposes, blueberry is used as a key name for all *Vaccinium*s except the cranberries—just as blackberry is used to designate the *Rubus* group. Locally the name huckleberry is used for some species, but this name is more commonly applied to the related genus *Gaultheria*.

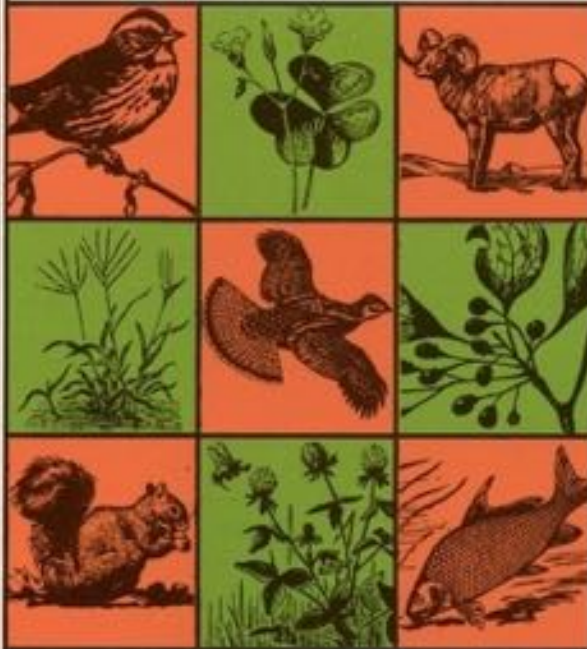
Blueberries are widespread over the country but are particularly plentiful in the eastern Coastal Plain and Alle-

ghanies. Like many other members of the heath family they prefer acid soil. They are found most commonly in relatively open woods or in clearing. Some species spread subterranean and form continuous thickets. Our standing in abundance in the East are the highbush blueberry (*V. corymbosum*), lowbush blueberry (*V. angustifolium*), and blue ridge blueberry (*V. pallidum*). In the Far West the dwarf blueberry (*V. cespitosum*), box blueberry (*V. vitifolium*), and big whorlberry (*V. membranaceum*) are prominent representatives of the group.

Blueberries are important to American wildlife. This fact is generally indicated by the ratio of **87\*/83 used!** The fruits are the chief attraction, probably for the same juicy, sweet-tastiness that appeals to us. For several



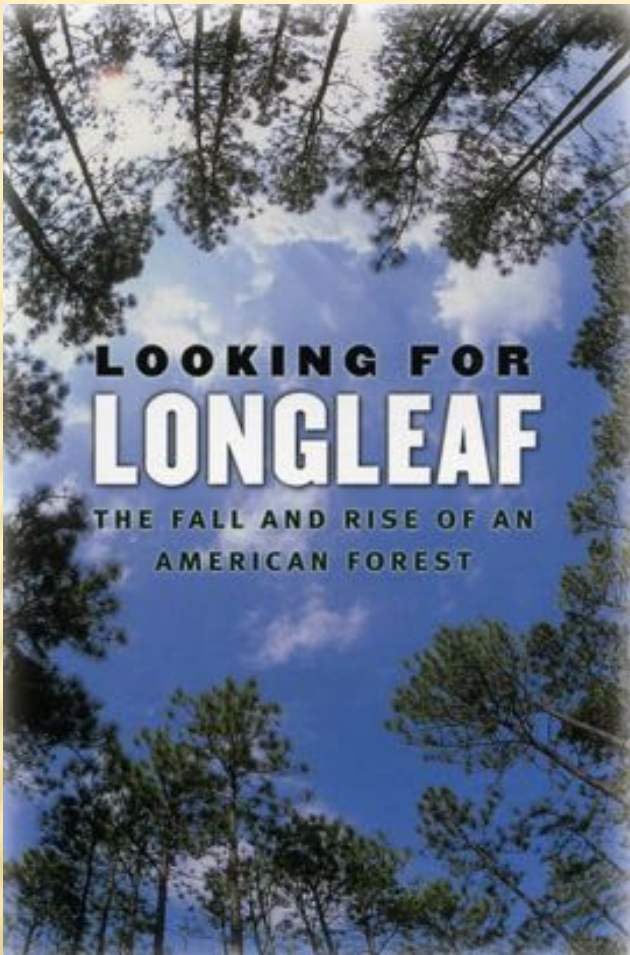
## American Wildlife & Plants A Guide To Wildlife Food Habits



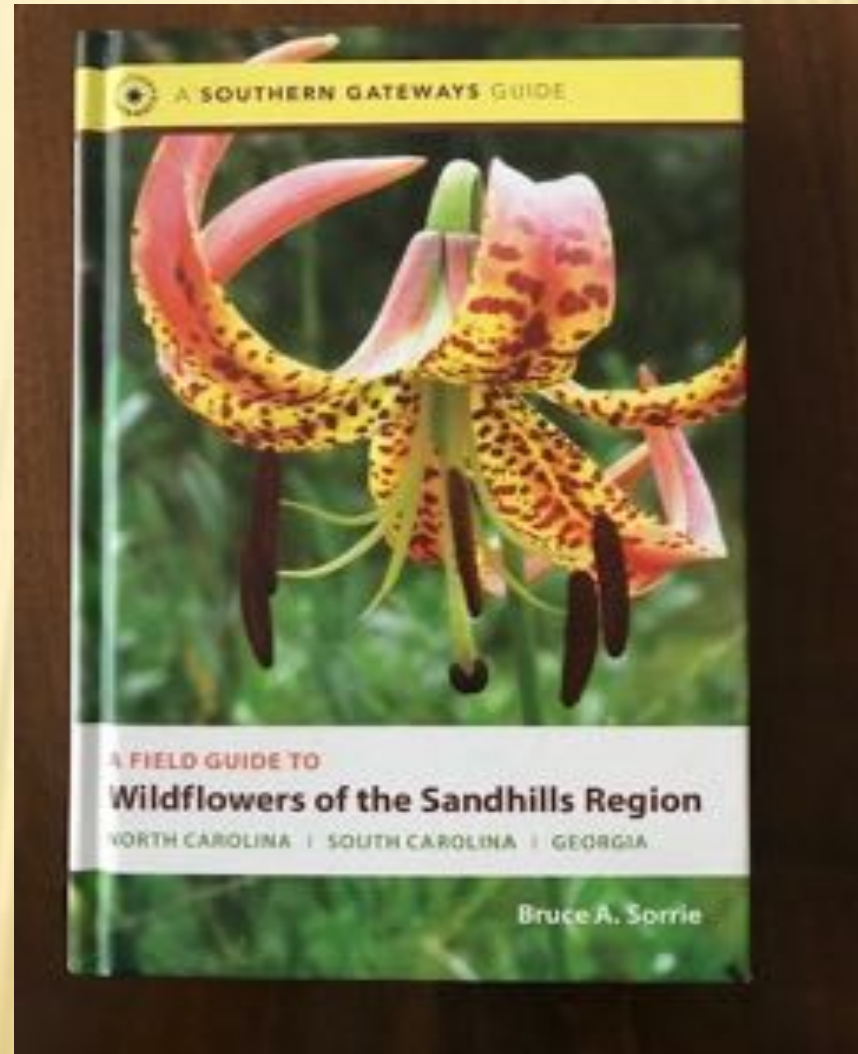
The use of trees, shrubs, weeds and herbs  
by birds and mammals of the United States

ALEXANDER C. MARTIN  
HERBERT S. ZIM  
ARNOLD L. NELSON

**Bruce Sorrie**  
**UNC Press**



**Lawrence Earley**  
**UNC Press**





*Taking fire out of the longleaf forest is like taking rain out of the rain forest.*      Larry Landers 1991